

AGENDA

Meeting: Amesbury Area Board
Place: Berwick Guide Centre, Stapleford Road, Berwick St James, Salisbury
SP3 4TS
Date: Thursday 22 March 2018
Time: 7.00 pm

Including the Parishes of Allington, Amesbury, Berwick St James, Bulford, Cholderton, Durnford, Durrington, Figheldean, Great Wishford, Idmiston, Milston, Newton Toney, Orcheston, Shrewton, Stapleford, Steeple Langford, Tilshead, Wilsford Cum Lake, Winterbourne, Winterbourne Stoke, Woodford and Wylke.

The Area Board welcomes and invites contributions from members of the public. The chairman will try to ensure that everyone who wishes to speak will have the opportunity to do so.

If you have any requirements that would make your attendance at the meeting easier, please contact your Democratic Services Officer.

Refreshments and networking opportunity from 6:30pm .

Please direct any enquiries on this Agenda to Lisa Moore Democratic Services Officer, direct line 01225 718262 or email jessica.croman@wiltshire.gov.uk

All the papers connected with this meeting are available on the Council's website at www.wiltshire.gov.uk

Press enquiries to Communications on direct lines (01225) 713114 / 713115.

Wiltshire Councillors

Cllr Graham Wright, Durrington and Larkhill
Cllr Mike Hewitt, Bourne and Woodford Walley
Cllr Fred Westmoreland, Amesbury West
Cllr Robert Yuill, Amesbury East
Cllr John Smale, Bulford, Allington and Figheldean
Cllr Darren Henry, Till and Wylke Valley

RECORDING AND BROADCASTING NOTIFICATION

Wiltshire Council may record this meeting for live and/or subsequent broadcast on the Council's website at <http://www.wiltshire.public-i.tv>. At the start of the meeting, the Chairman will confirm if all or part of the meeting is being recorded. The images and sound recordings may also be used for training purposes within the Council.

By entering the meeting room you are consenting to being recorded and to the use of those images and recordings for broadcasting and/or training purposes.

The meeting may also be recorded by the press or members of the public.

Any person or organisation choosing to film, record or broadcast any meeting of the Council, its Cabinet or committees is responsible for any claims or other liability resulting from them so doing and by choosing to film, record or broadcast proceedings they accept that they are required to indemnify the Council, its members and officers in relation to any such claims or liabilities.

Details of the Council's Guidance on the Recording and Webcasting of Meetings is available on request.

Parking

To find car parks by area follow [this link](#). The three Wiltshire Council Hubs where most meetings will be held are as follows:

County Hall, Trowbridge
Bourne Hill, Salisbury
Monkton Park, Chippenham

County Hall and Monkton Park have some limited visitor parking. Please note for meetings at County Hall you will need to log your car's registration details upon your arrival in reception using the tablet provided. If you may be attending a meeting for more than 2 hours, please provide your registration details to the Democratic Services Officer, who will arrange for your stay to be extended.

Public Participation

Please see the agenda list on following pages for details of deadlines for submission of questions and statements for this meeting.

For extended details on meeting procedure, submission and scope of questions and other matters, please consult [Part 4 of the council's constitution](#).

The full constitution can be found at [this link](#).

For assistance on these and other matters please contact the officer named above for details

	Time
1 Welcome and Introductions	7.00pm
2 Apologies for Absence	
3 Minutes (<i>Pages 1 - 8</i>) To confirm the minutes of the meeting held on 18 January 2018.	
4 Declarations of Interest To receive any declarations of disclosable interests or dispensations granted by the Standards Committee.	
5 Chairman's Announcements (<i>Pages 9 - 10</i>) The Chairman will introduce the announcements and invite any questions.	
6 Updates from Partners and Town/Parish Councils (<i>Pages 11 - 16</i>) To receive updates from the Town and Parish Council Representatives, and from other partner organisations, including outside bodies on which the Area Board is represented.	
7 Local Youth Network Update and Youth Activities Grant Applications (<i>Pages 17 - 32</i>) i. Update for the financial year 2017/18 ii. Grants	
8 SFA and Army Rebasing To receive an update from Lovells.	
9 A303 Update To receive an update from Highways England.	
10 Update from the Community Area Transport Group (CATG) (<i>Pages 33 - 84</i>) To consider an update and recommendations from the Community Area Transport Group (CATG) in relation to the funding available towards Local Transport Projects. The Minutes of the latest CATG meeting are attached for information. To ratify the recommendation from the CATG to agree the Highway Maintenance Scheme 18/19.	

11 **Health & Wellbeing Group** *(Pages 85 - 88)*

To receive an update on activities and achievements 2017/18

12 **Community Area Grants** *(Pages 89 - 98)*

To determine the applications for Community Area Grant funding.

To receive a summary of grants for 2017/18.

13 **Urgent items**

Any other items of business which the Chairman agrees to consider as a matter of urgency.

14 **Future Meeting Dates, Evaluation and Close**

The next meeting of the Amesbury Area Board will be held on 24 May 2018 at Durrington Village Hall.

MINUTES

Meeting: AMESBURY AREA BOARD
Place: Antrobus House, 39 Salisbury Road, Amesbury, SP4 7HH
Date: 30 November 2017
Start Time: 7.00 pm
Finish Time: 8.15 pm

Please direct any enquiries on these minutes to:

Jess Croman Democratic Services Officer, Tel: 01225 718262 or (e-mail) jessica.croman@wiltshire.gov.uk

Papers available on the Council's website at www.wiltshire.gov.uk

In Attendance:

Wiltshire Councillors

Cllr Mike Hewitt, Cllr Fred Westmoreland, Cllr Robert Yuill, Cllr John Smale and Cllr Darren Henry

Wiltshire Council Officers

Dave Roberts, Community Engagement Manager
Lisa Moore, Democratic Services Officer

Town and Parish Councils

Amesbury Town Council – P Allen & R Allen
Durrington Town Council – S Paines & M Ward
Bulford Parish Council – J Clark
Winterbourne Parish Council – C Penn
Winterbourne Stoke Parish Council – T Zacks-McGoldrick

Partners

Police – Inspector Christian Lange
Garrison Commander – James Balls

Total in attendance: 22

<u>Agenda Item No.</u>	<u>Summary of Issues Discussed and Decision</u>
50	<p><u>Welcome and Introductions</u></p> <p>The Chairman, Councillor Mike Hewitt welcomed everyone to the meeting of the Amesbury Area Board. At the Chairman's invitation, the Councillors introduced themselves.</p>
51	<p><u>Apologies for Absence</u></p> <p>Apologies for absence had been received from:</p> <ul style="list-style-type: none"> • Cllr Graham Wright • Tom Broland – Fire & Rescue
52	<p><u>Minutes</u></p> <p>It was noted that Charles Penn from Winterbourne PC was in attendance at the last meeting, however this had not been recorded in the attendance section.</p> <p><u>Decision</u> The minutes of the meeting held on 14 September 2017 were agreed as a correct record and signed by the Chairman.</p>
53	<p><u>Declarations of Interest</u></p> <p>There were no declarations of interest.</p>
54	<p><u>Chairman's Announcements</u></p> <p>The Chairman noted that item 9 – A303 Legacy Group would be brought up the agenda.</p>
55	<p><u>Updates from Partners and Town/Parish Councils</u></p> <p>The Chairman referred to the updates set out in the agenda and invited further updates from Town/Parish Councils and other Partners, including outside bodies. It was noted that the preferred option was for written updates, to minimise time spent during the meeting.</p> <p>New Garrison Commander for Tidworth, Netheravon and Bulford introduced himself.</p> <p>Cllr Westmoreland – noted that Larkhill Causeway had been nominated again for the archaeologist award 2018. It had been awarded second place the previous year, he urged everyone to go online and vote, so that it may win this year. Tomorrow goes live until 15th February: https://www.archaeology.co.uk/articles/larkhill-causewayed-enclosure.htm</p>

	<p><u>Town and parish council events:</u></p> <ul style="list-style-type: none"> • 6th Dec – Amesbury Christmas lights and markets
56	<p><u>Local Youth Network Update and Youth Activities Grant Applications</u></p> <p>Cllr Darren Henry gave an update on behalf of the Local Youth Network (LYN).</p> <p>The group had found that there had not been enough attendance from the young people, so had decided to go to the schools and talk to them to engage with more young people.</p> <p>Next LYN in Jan will be combined with the Amesbury AB members, hoping to get as many young people as possible. Discussing topics of interest to the young people. This was scheduled to take place on 10 Jan at Avon Valley College.</p> <p>Some of the topics for discussion will include:</p> <ul style="list-style-type: none"> • Cyber bullying • Mental health • Leisure • Diversity • Volunteering <p>Cllr Henry recommended that £500 of Youth Funding be set aside to pay for transport and refreshments associated with this event.</p> <p><u>Decision</u> The Amesbury Area Board set aside up to £500 of youth funding towards the Youth event on 10th January 2018.</p> <p>The Board heard from Cllr Henry on the two Youth Projects which had requested funding from the Youth Budget.</p> <p><u>Decision</u> The Amesbury Area Board awarded £ 4,634 to The Bridging Project towards the Durrington Youth Work Project.</p> <p><u>Decision</u> The Amesbury Area Board awarded £470 to Shrewton Youth Club towards the Youth Extra project.</p>
57	<p><u>Update from the Community Area Transport Group (CATG)</u></p> <p>The Chairman gave an update from the CATG and noted the minutes of the last meeting, attached to the agenda.</p>

	<p>Funding was still available for missing street signage. The Chairman urged parishes to submit their requests to the CEM. Ref in 6a typo – Salisbury street not Salisbury road.</p> <p>The Board then considered the recommendations for funding arising from the last CATG meeting as detailed in the report attached to the agenda.</p> <p><u>Decision</u> The Amesbury Area Board approved the recommendations for funding from the CATG as detailed in the report:</p> <ul style="list-style-type: none"> • £2,500 - 4053 – High Street/Lining works A360 Shrewton • £1,400 – 4968 – Junction of the Portway & the A338, topographical survey • £1,000 – 5739 – Boscombe Road, Bus clearway marking. • £3,000 - 5743 – Bulford Road Durrington, bollards. • £5,000 to be set aside for street nameplates.
58	<p><u>A303 Legacy Group</u></p> <p>The Chairman introduced Christopher Jones, consultant to Highways England, who provided an update on the proposed work to the A303.</p> <p>There was a Government Strategy to create an expressway along the A303/A358 corridor. There had been issues including that the road would go through a world heritage site. Three schemes were being promoted on a parallel timescale.</p> <p>Following the consultation early this year, the preferred route was announced in September 2017.</p> <p>The line of the route was moved back up closer to the A303 and closer to Winterbourne Stoke. There would be two junctions either side of the World Heritage Site, with a twin bored tunnel 8 miles long.</p> <p><u>What has been happening</u></p> <ul style="list-style-type: none"> • Development of the preferred route • engagement with local community • discussion with land owners and other stakeholders directly affected by the scheme • Carrying out additional surveys and studies • developing the traffic model. <p><u>Next steps</u></p> <ul style="list-style-type: none"> • Early 2018 – formal consultation • Feedback taken into consideration before submitting a planning application.

- In the pre-application phase now.

For further details:

Email: A303stonehenge@highwaysenlan.co.uk

Phone: 0300 123 5000

Questions:

- Would Long Barrow roundabout be a roundabout after the road was finished? Answer: No, the A303 would go under.
- Did the proposals include a plan to shut some access to the A303, east of the Solstice junction? Answer: The through road to London from the south, would not have these cross overs.
- Highways England had not yet approached the land owners and the affected farmers. Answer: They had been in contact with those directly affected.
- The Allington Track is proposed to be closed to vehicular traffic, this was detailed in the scoping paper. Answer: This was as a consequence of creating the express way.
- You are so close to going to public consultation and yet you have not yet contacted the landowners. Answer: We can have a separate conversation out of the meeting to discuss this. Before any proposals to close the track, there would need to be discussions on what affect the closure of the track would cause, and include those affected by it.
- There were genuine and deep-felt concerns relating to the Allington Track scheme. Consequence of expressway status the Allington track will have to close. Therefore, the landowners, farmers, Boscombe down have concerns. We ask that you have detailed consultation with these people. Answer: That detailed consultation will happen before the proposals are put forward.
- Those concerned with the access on the north side to Bulford, would need to be consulted on as well. When there is a grade separation junction at countess the nature of the traffic on that road will change greatly. This level of impact needs to be included in the plans. Answer: Highways England would talk to all interested parties. The traffic model would look at all of the surrounding impacts on the local road network.
- When would the traffic modelling start? Answer: The model is in hand. From February, onwards there would be a consultation where there will be ample opportunities for all of these issues to be discussed.
- Once an expressway is conceived and planned it would extend the whole length of the A303, so there would be a lot of people interested. We hope the consultation process does listen to those concerns. The Allington track is the crash gate for Boscombe Down. Needs to be fully addressed in the planning. Answer: That detail would be picked up during the consultation.

Note: Since the meeting the following additional information has been fed back, in regards to the Allington Track:

	<p><i>Christopher has since been in contact with the two agents who had asked about the Allington Track at the Board meeting. It had been clarified that consideration was being given, as part of the A303 Stonehenge project, to the closure of the Allington Track where it connects with the A303 to make the road safer. Those agents would be having a meeting with the project team members looking after this aspect on 12 December, where they will have the opportunity to learn more and volunteer their views on behalf of their clients.</i></p> <p>The Chairman thanked Christopher Jones for attending to provide the update.</p>
59	<p><u>Health and Wellbeing Group</u></p> <p>Dave Roberts gave an update on the work of the Group and drew attention to the notes from the last meeting as attached to the agenda.</p> <p>An exciting opportunity for the Amesbury community was the proposed 21 beds and 42 bed unit due to open spring 2018 Further details of this scheme would be available at an event in Amesbury Library tomorrow at 4pm.</p> <p>Over 100 older people had taken part in consultations and themed events. The Safer Places Scheme had started up in two areas and there were plans to start dementia friendly communities.</p> <p>Dave would be meeting with Stonehenge visitor centre, to set up Dementia Friends training for all the staff.</p> <p>There would be 6 mini buses providing transport for the older people to the event. Dave urged people to pass on the information to anyone that may be interested. Luncheon club attendees had also been invited to the event.</p>
60	<p><u>Community Area Grants</u></p> <p>Councillor Westmoreland, Lead member for Grants, introduced this item. The Members considered five applications for funding.</p> <p><u>Decision</u> The Newton Tony Memorial Hall was awarded £850 towards Refurbishment project at the hall. <u>Reason</u> - The application met the Community Area Grants Criteria 2017/18</p> <p><u>Decision</u> Bulford St Leonards Scout Troup was awarded £1,500 towards the installation of a heating unit. With the condition that if the whole amount was not required then any remaining funds be returned. <u>Reason</u> - The application met the Community Area Grants Criteria 2017/18</p> <p><u>Decision</u> Durrington Day Centre was awarded £968.76 towards new chairs for the</p>

	<p>day centre. <u>Reason</u> - <i>The application met the Community Area Grants Criteria 2017/18.</i></p> <p><u>Decision</u> Durrington Football Club was awarded £967.90 towards the floodlight expansion. <u>Reason</u> - <i>The application met the Community Area Grants Criteria 2017/18.</i></p> <p><u>Decision</u> Bulford Parish Council was awarded £5,000 towards the update works of the playground. <u>Reason</u> - <i>The application met the Community Area Grants Criteria 2017/18.</i></p> <p>It was noted that there was an approx. £25,000 of funding remaining for the rest of the financial year, with there being two area boards left.</p>
61	<p><u>Urgent items</u></p> <p>There were none.</p>
62	<p><u>Future Meeting Dates, Evaluation and Close</u></p> <p>It was noted that the next meeting of the Amesbury Area Board would be held on Thursday 18 January 2018 – Community Awards.</p> <p>The Chairman thanked everyone for attending.</p>

This page is intentionally left blank

REAL CHANGE WILTSHIRE

The best chance for a homeless person to get off the streets is with professional help from a charity or support organisation.

Making sure help reaches homeless people is far more effective than giving money to people on the street.

If you do want to donate, your small change can make a real change in Wiltshire – and a big difference to charities supporting the homeless.

Find out how you can help – www.wiltshire.gov.uk/realchangewiltshire

To notify the right people about a rough sleeper – www.streetlink.co.uk

#realchangewilts

Amesbury Area Board Police Report March 2018

1. East Community Policing Team

Sector Head: A/Insp James Williams

Sector Deputy:

Community Coordinator: Pc Lucy Wileman

Amesbury PCSO: PCSO Levi Morphy

Durrington/Bulford/Larkhill & Figheledean PCSO: PCSO Pippa Brewer

Improvement to Wiltshire East and Wiltshire South Community Policing Teams

The boundaries of the Wiltshire East and Wiltshire South Community Policing Teams are being amended to improve the way local policing teams are managed.

The changes are being brought into place from 2 April 2018 and will see Amesbury and Tidworth move from Wiltshire East CPT to Wiltshire South CPT. Devizes, Pewsey and Marlborough will remain as Wiltshire East CPT.

Supt Chris Chammings, Wiltshire Police's Hub Commander for County, said: "This is a very simple change which we hope will make a big difference for the public, our officers and staff.

"We continually review how our CPT areas are policed and following feedback from staff we have decided to align Amesbury more closely to Salisbury."

"From a geographical and resourcing perspective we believe Amesbury and Salisbury would work better together."

He added: "As far as the public are concerned they shouldn't notice a difference in their day-to-day policing. Our officers and staff who are currently based in Amesbury will remain there, but their line management will now fall under Inspector Pete Sparrow in Wiltshire South.

"We hope to see improved resilience across Salisbury and Amesbury as officers are deployed consistently under one Inspector. Our previous model relied on Amesbury providing resilience to Devizes and vice-versa. This distance between Amesbury and Devizes hindered this; an issue we hope not see going forward."

Supt Chammings added that the boundary change would also allow the new, smaller Wiltshire East CPT to focus more closely on the community engagement demand in the areas of Devizes, Marlborough and Pewsey.

To learn more about Community Policing (note this refers to the current set-up, before the boundary change) please visit our [website](#)

News:

Wiltshire Police has announced Chief Constable Mike Veale will be stepping down in his role and has accepted the Chief Constable position for Cleveland Police; his last day will be 4th March 2018.

Mr Veale has said "It has been a very difficult decision to make, after serving here in Wiltshire for 13 years and the wider West Country for almost 34 years. However, I feel it is the right time for a new challenge and it is for that reason that I plan to make this move. I would like to publicly thank my officers and staff for their unwavering support for me during my tenure as Wiltshire Police chief constable."

Kier Pritchard will become Temporary Chief Constable. His appointment will be for a period of 12 months. Kier is an experienced senior police officer and will provide stability innovation and build upon excellent foundations. Wiltshire Police is an outstanding force with many strengths and we feel sure that we have the strong leadership in place to continue and maintain our excellent reputation. Kier will take up post of Temporary Chief Constable on Monday 5 March 2018.



**If you have any questions about any of the above,
please contact Angus Macpherson on:
policeandcrimecommissioner@wiltshire.pcc.pnn.gov.uk**

Wiltshire Police will have a new Deputy Chief Constable as of 5 March.

Following Chief Constable Mike Veale's appointment at Cleveland Police, changes have been made to the Force's leadership.

Current Assistant Chief Constable Kier Pritchard will become Temporary Chief Constable and he has now appointed Paul Mills, who is also currently an Assistant Chief Constable, as Temporary Deputy Chief Constable.

Mr Pritchard said: "I'm delighted to be able to announce that Paul Mills will become Temporary Deputy Chief Constable as of 5 March.

"Paul is a highly regarded colleague who I have worked alongside as a Chief Officer in our Force since 2014.

"The appointment of a Deputy provides additional stability to the Senior Leadership Team in the force and will allow us to continue to work closely with the Police and Crime Commissioner in meeting the priorities he has set for the Force within his Police and Crime Plan. Central to this is our Community Policing Team approach which I believe is the core of what British Policing represents."

Mr Mills added: "I am delighted to step up to the role of Temporary Deputy Chief Constable. I am pleased to be able to support T/Chief Constable Kier Pritchard as he steps up to undertake his new role and look forward to working with him to provide consistency of leadership and direction to the Force moving forward.

"Having transferred to Wiltshire 11 years ago, I have developed a strong affinity with the county and look forward to continuing to develop positive working relationships with our dedicated staff and partners who all help to make the county one of the safest places to live and work in the UK."



Please follow us on:

Twitter <https://twitter.com/wiltshirepolice>

Facebook <https://www.facebook.com/wiltshirepolice/>

Or sign up to Community Messaging <https://www.wiltsmessaging.co.uk/> Our free Community Messaging service will also help keep you updated about policing and crime in your local area.



2. CPT - Current Priorities & Consultation Opportunities:

Current Priorities Amesbury and surrounding areas.

Theft from Motor Vehicles

This priority continues for the whole patch. Since our last report there has been an increase in Theft from Work vans but pleased to say this dropped off

We have a surplus in beauty spot signs which Area Board funded. Over the coming month Pc Wileman will contact Parish Clerks to see who would like some signs to put up on their areas at suitable locations.

Theft from Work Vans

It's thought that the break-ins have been carried out using a lock-picking device which is capable of bypassing the lock system without causing any damage to the vehicle. There's no restriction on the sale of locksmith equipment in the UK, meaning such devices are available on the open marketplace.

It's worth pointing out that Transit vans are not the only commercial vehicle at risk. No van is 100% secure when faced with a suitable lock pick device, however the sheer volume of Transits out on the road means the number of reported break-ins will consequently be higher.



What can I do to protect my van?

All van owners are advised to fit an alarm and boost security by installing additional Slamlocks or deadlocks independently of the manufacturers. It is also a good idea to consider insuring your work tools. This is important because most standard van insurance policies do not cover loss of tools left in a van overnight. In fact, some policies state that you can't store tools in your van unless it meets certain security requirements. Don't get caught out, and check.

Anyone that owns a Ford Transit Van built between 28 March 2012 and 1st July 2017 can have an update applied to their vehicle.

Will it cost me anything to have the software update done?

Not at all, this is a Ford-initiated recall and update, so the modification should be applied for free by your local dealership.

Target Patrols Amesbury and surrounding areas

The Croft Newton Tony

Following a series of repeated thefts at the location, a target patrol commenced on 1st February 2018 To date 16 patrols have taken place, we are pleased to say that no further incidents have been reported.

Neighbourhood Tasking Meeting

The next NTG is booked for 7pm at the Bulford Village Hall on 29th March 2018.

Media

Consultations

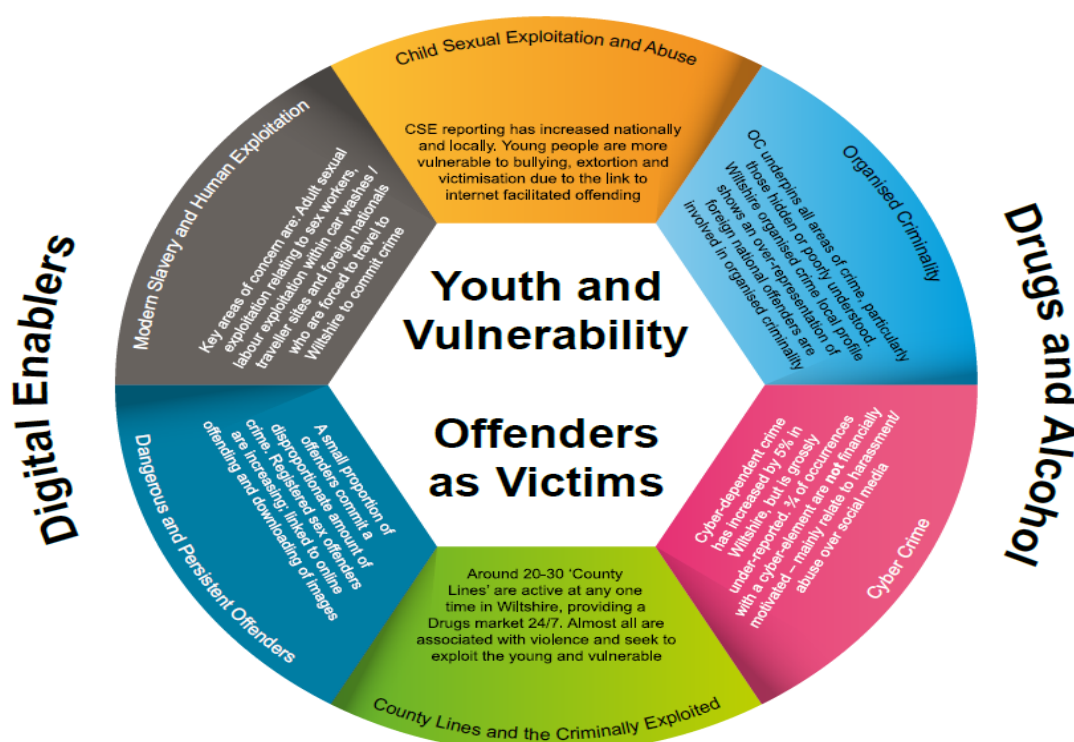
Your PCSO's are carrying out consultations on their areas.

Update re Rural Crime Partnership

Rural crime operations continue, in our efforts to target what is often cross border organised criminal activity.

3. Wiltshire Police Control strategy

Below is our Control Strategy for your reference. This focuses on how we conduct our operational policing based on the Police and Crime Plan. We will continue to align our resources with the threat/harm/risks presented in line with the control strategy.



Child sexual exploitation and abuse

Young people often enter the criminal justice system as a direct result of being exploited by others for financial or sexual gain. This has been recognised recently with a shift in focus to these young people being dealt with as Criminally Exploited and Vulnerable (CEV) individuals. Where circumstances dictate, this will mean that the safeguarding of these young people will take precedence over any criminal offences they may have committed. Those doing the exploiting are the individuals that should be targeted.

Please be vigilant for young people who may be being exploited in this way and report to Police through the normal channels.

Organised criminality

Operation Sirius is a dedicated response team investigating Asian Gold burglaries, one of which recently occurred within this area. Our local officers have also been engaging with businesses in the town requesting they report anything or anyone acting suspiciously in their neighbourhood, unknown or unexpected doorstep traders, unusual vehicles, many offenders use high performance vehicles. Please be mindful if you see such a vehicle driving around your area. We work closely with forces nationally, sharing information, helping to tackle this criminality which occurs throughout the country.

Cybercrime

Our Cyber Crime Prevention Officer is working closely with our partners within the region including attending Area Boards.

Many of the cyber scams which succeed occur following an individuals response to act quickly to an instruction or use distraction techniques so that less concentration occurs on the task in hand.

County Lines and the Criminality Exploited

Two men have been sentenced to a total of six years and six months imprisonment after pleading guilty to possession with intent to supply class A drugs.

Thomas Houston, aged 22, from Laverstock, was sentenced to two years and six months and Daniel Agostini-Brown, 21, from London, was sentenced to four years in prison when they appeared at Winchester Crown Court on Friday 26 January.

On 18 September 2017, Houston was stop checked by police along the river walk near Waitrose in Salisbury after he was seen to conduct a suspected drug deal.

Officers suspected he had something in his mouth - he subsequently spat out five wraps that were found to contain crack cocaine.

He was arrested, interviewed and released under investigation while further enquiries were carried out.

On 8 November 2017, Houston was located within a local drug users address in Exeter Street with Agostini-Brown.

Inside the address, officers discovered 39 wraps of crack cocaine and heroin as well as cutting and bagging materials. Agostini-Brown also had £1,335 in cash on him. It is believed he had travelled from London to Salisbury for the sole purpose of supplying class A drugs to local users.

Both were arrested, charged and remanded for drug supply offences.

PC Luke Barnett, of the Dedicated Crime Team, said: "Disrupting the supply of class A drugs in Salisbury continues to be a priority for us as once again we have seen an individual travelling into our county to take over a vulnerable drug user's house using violence, intimidation and exploitation for the sole purposes of making money through selling drugs.

"Agostini-Brown was found to have pictures on his phone that he had sent out on social media boasting about how much money he had earned in Salisbury - these individuals do not use class A drugs themselves nor do they care about the harm they are causing to others.

"We will continue to target these individuals to ensure they are put before the courts and the most vulnerable people within our communities are protected."

To report drug activity in your neighbourhood, please call 101.

Dangerous and Persistent offenders

Work is continuing with our SWITCH nominals, (those who are identified as persistent and prolific offenders), including intelligence gathering and relevant actions following dissemination. We currently have two nominals within the East Policing Area classified as such and we work closely with our SWITCH team members and partner agencies to manage these offenders.

Modern Slavery and Human Exploitation

Domestic Abuse

A third of DA perpetrators are repeat offenders. A quarter of offenders have also been the victim of DA.

James Williams

Acting Sector Inspector,
Wiltshire East CPT



Report to	Amesbury
Date of Meeting	22/03/2018
Title of Report	Community Youth Grants

1. Purpose of the report:

To ask Councillors to consider the following applications seeking funding from the Amesbury Area Board.

Application	Grant Amount	Total cost of project
Applicant: Wessex Community Action Project Title: Amesbury Youth Cafe	£5,000.00	£18,600
Applicant: La Folia Project Title: Continuing Songs at Wiltshire College Salisbury 2018	£1,750.00	£21,100
Applicant: 1st Boscombe Down Guides Project Title: 1st Boscombe Down Guides Summer activity camp	£400.00	£2,015.00

2. Main Considerations

Councillors will need to be satisfied that grants awarded in the 2014/15 year are made to projects that can realistically proceed within a year of the award being made.

Area Boards have authority to approve Area Grants under powers delegated to them by the Cabinet member for Communities, Campuses, Area Boards, Leisure, Libraries and Flooding. Under the Scheme of Delegation Area Boards must adhere to the Area Board Grants Guidance 2017/2018.

Community Youth Grants will contribute to the continuance and/or improvement of cultural, social and community activity and wellbeing in the community area, the extent and specifics of which will be dependent upon the individual project.

Community Youth Grants give all local community and voluntary groups, Town and Parish Councils an equal opportunity to receive funding towards community based projects and schemes.

3. The applications

<p>Applicant: Wessex Community Action Project Title: Amesbury Youth Cafe</p>	<p>Amount Requested from Area Board: £5,000.00</p>	<p>Total cost of project £18,600</p>
<p>This application meets grant criteria.</p> <p>Project Summary: The Youth Cafe is a drop-in facility catering for the needs of a wide cross section of young people aged 13-19 years old. We established the Cafe in 2015 at the request of the Amesbury Area Board to address the issue of anti-social behaviour in Amesbury. The cafe runs on Tuesday and Friday evenings with additional pastoral outdoor work being done around the town at other times and events being run on an adhoc basis. The main sessions take place in the fully equipped premises at the Redworth Centre and we are building on the initial two years of this successful growing facility. The young people have access to simple refreshments and a variety of recreational activities such as pool Xbox and table football.</p> <p>The Youth Cafe is open to all and free to attend. The cafe provides a safe place for young people to go in the evenings and this contributes to a reduction in anti-social behaviour and general mischief-making among this challenging group. Local people are volunteering at the cafe and we signpost young people to other positive activities which are taking place locally improving the take up of these activities. The young people are encouraged to set their own agenda and be involved in the planning and running of the facility but with no obligation. We have talked to young people and discussed their wishes needs and desires. Young People are involved in the layout of the furniture the programming and the implementation of our activities. Darren and Jonathan try to talk face to face with each young person making small talk as often as possible and this has often led to meaningful conversations. The cafe is widely advertised especially in all the local schools and using social media. We provide a free cafe-style facility designed to meet some of the basic leisure needs for young people aged 13 to 19 and steer them in the direction of other more specific positive activities. Young People have access to simple refreshments and a variety of recreational activities. More expensive snacks are available at a cost and the small profit from these is used to purchase the free refreshments such as tea coffee and toast which are available to everyone. The availability of these simple refreshments also gives the cafe an informal welcoming and homely feel. We have set up the Amesbury Youth Forum to enable all community partners to liaise and work together. We continually monitor our activities to evaluate the overall success of the project. Over the last year we have done the following activities with the Young People- 101 Youth Cafe Sessions Open Access- 26 Additional Cafe Session Targeted - Organised a Skatejam- Taken part in the Amesbury</p>		

Festival of Youth- Taken part in Amesbury Carnival- Performed 400 hours of pastoral youth work- Taken the lead in the Amesbury Youth Forum. We also held the following special events- 2 comedy nights - 1 magic illusionist night - 1 Live Guitar Musician Cabaret - 6 Disco led parties- a Retro Cinema Roll-in Movie night drive in movie for skateboards and scooters- 3 Barbecues at various recreation grounds in Amesbury- We attended Salisbury Carnival a theatre night and a community theatre evening Over 150 individuals have attended the Youth Cafe. Averaging 18 people a night. We have offered training and induction in safeguarding food safety and first aid to 8 volunteers.

Amesbury LYN met on 9th March 2018 and recommend that the area board award this funding.

<p>Applicant: La Folia Project Title: Continuing Songs at Wiltshire College Salisbury 2018</p>	<p>Amount Requested from Area Board: £1,750.00</p>	<p>Total costs of project £21,100.00</p>
---	---	---

This application meets grant criteria 2014/15.

Project Summary: La Folia is a charity that brings together instrumentalists singers actors dancers visual artists and writers to create new music original projects and ground-breaking performances. We aspire to confront barriers of every kind with a freedom and dynamism that re-defines established ways of working creates change and ultimately transforms music and people. Continuing Songs is an exciting new development for us having worked with pupils at Exeter House School for many years this is our first chance to continue creative work with Foundation Studies students in Higher Education at Wiltshire College. This song-writing project will see students both known and new to us working with professional musicians to create a body of new work which will be recorded and produced as a CD which the students will design market and promote for sale.

The needs and interests of young carers those with health needs and young people with special educational needs are no different to other young people they want to try new things make more music and they say music contributes to their well-being. Continuing Songs has been specifically developed in response to this need quoted from Wiltshire Music Connect Take Note 2016. Continuing Songs will work with 30 Wiltshire College Salisbury Foundation Studies students with special educational needs aged 16 to 22 from April to July 2018. There will be 5 full day song-writing workshops and 3 full day recording sessions led by 5 professional musicians and artists culminating in the students recording and marketing a CD and live album launch in July 2018. The project will introduce new skills beyond creating new music to include development of artwork CD manufacture and marketing. Data provided by Wiltshire College shows a concentration of Foundation Studies students attending Salisbury campus

from the Amesbury area an estimate of nearly 20 per cent of all Foundation Studies students. The detail below sets out how young people from this Area Board will benefit in term of creative engagement and life skills development. There is a real risk to wellbeing when leaving the Colleges nurturing environment and our projects find ways for students to be heard and get noticed with skills that will prepare them for living and working in the adult community. We are particularly keen to monitor these outcomes see evaluation when working with College students inhabiting a nearly-adult world. How does your project support local needs and priorities People with a learning or sensory disability have little to occupy them after the age of 18 Wiltshire Uncovered Report 2014 Wiltshire Community Foundation. Continuing Songs links to local priorities of accessibility and affordability as schools and Colleges are less and less able to fund high quality music for their pupils. Our music projects therefore meet a real need for live music experiences we bring professional music making to students that is readily available in concert halls but most of them will never be able to go to such venues for both physical and financial reasons. How have young people been involved in your project so far Foundation Studies students from Wiltshire College were involved in the pilot stage of this project in June 2017. They wanted to develop the project from song-writing to encompass additional skills of recording marketing and performing the album launch. Please note that income from CD sales from the project are not shown in the budget as profits from the sales will stay with Wiltshire College and act as seed corn money for future projects to be decided by the students. This extends the benefit of the project far beyond the workshops and performance and allows the students to shape future project work and skills development for themselves. How many young people to do you expect to benefit 30How will your project be accessible and affordable This project has been developed by and for students at Wiltshire College Salisbury. Participating students will be selected by College tutors and staff to include those who have worked with us before perhaps when they were students are Exeter House School and those who are completely new to the work of La Folia. The project is offered within the curriculum and at no additional cost to participants. How will you encourage volunteering and community involvement. The album launch will be marketed as a public event not limited to invited family and friends to maximise community support and awareness. Students will be working closely the Colleges marketing team and La Folia's marketing manager to promote CD sales and album launch through social media websites and local print and broadcast media. This will be planned with students from the early stages of the project so they can see how successful marketing is integrated into the delivery and development of a project of this kind. It might include teaser campaigns of artwork recorded clips photographs of workshops video diaries etc. How will you ensure your project is accessible to everyone Disabled low incomes vulnerable etc. This project is accessible to those Foundation Studies students at Wiltshire College who have been identified by staff as most in need of it. They are young people with a range of learning and physical difficulties. How will you work with other community partners La Folia is applying for funding to support 2018 projects from community partners including Wiltshire Music Connect confirmed and Wiltshire Community

Foundation pending outcome June 2018. We are closely networked in local arts and community groups to ensure we remain up to date with training funding and strategic developments locally and regionally as well as CPD opportunities for administrative and artistic team members. These include Teaching Young Voices 2017 SOLO Salisbury Outreach Learning Opportunities membership of British Association for Music Therapy Postgraduate Certificate in Child Health and Music Megan Brand Arts Health Early Career Research Network.

The evaluation will assess Key performance indicators number of participants number of workshops number of artists number of CD sales The quality of the musical experience characterised by creativity engagement and musicality evaluated through diary entries from artists and music leaders after each session The social and wellbeing impact on young people and family members including measures of social integration emotional inclusion belongingness participation contentment motivation and engagement with the arts evaluated through questionnaire at start and end of project and anecdotal feedback after each session. Monitoring progress throughout the sessions highlighting personal bests and high standards of the participants Too often we are thinking about tasks rather than the development of musicianship - so no progression in anything. Paul Hamlyn Foundation Inspiring Music for All 2014 evaluated through diary entries from artists and music leaders after each session Impact of the project on teachers. How teachers see the project enhancing children's musical enjoyment and musical skills social and emotional wellbeing and attitudes to learning throughout the school curriculum. How we can best support teachers carry these results forwards investigate their needs for CPD training better partnership working more consistent quality of provision etc. Evaluated through questionnaire at start and end of project and anecdotal feedback after each session Impact of the project on the artists Some of the world's finest performers who have worked on La Folia projects won't mind my saying that they have felt honoured to step into this process informing their musicianship and quest for integrity in their own music making. It has certainly changed and inspired my life. Howard Moody Evaluated through questionnaire at start and end of project and anecdotal feedback after each session

Amesbury LYN met on 9th March 2018 and recommend that the area board award this funding.

<p>Applicant: 1st Boscombe Down Guides Project Title: 1st Boscombe Down Guides Summer activity camp</p>	<p>Amount Requested from Area Board: £400.00</p>	<p>Total cost of project £2,015.00</p>
--	---	---

This application meets grant criteria.

Project Summary: A Region wide adventure weekend camp. We would

like to take the unit to this large-scale event to allow Amesbury Guides to experience multiple activities and develop their personal skills. We have a lot of low income families in the unit so would like to help reduce the cost per ticket for each of them.

1st Boscombe Down Guides meets weekly in Amesbury with 20 girls from across the Amesbury and surrounding villages. Each year we aim to take the Guides away on a camp. Camps and holidays help local children to work on their communication independence organisation skills whilst having fun with a variety of activities and learning new skills. Both unit leaders have their Going Away With Licence and after talking to the Guides about their interests and what they would like to do As Guides is Girl Lead we would like to take local Amesbury Guides out to experience a large-scale camp with Guides and Senior Section from across the Region. Activities available to the Guides include sailing canoeing kayaking rowing raft building and wind surfing. Or they can keep their feet on dry land for climbing archery geo-caching crafts and much more. Benefiting their life experiences to a range of backgrounds across Amesbury and the surrounding villages. As Girl guiding units are volunteer lead we have our three volunteers required for the ratio Two qualified 1st aiders. There are many units in the Stonehenge Division and so will be doing a news report to send to the many community partners and other papers on the event in the hope to attract new members for all age units showing how much fun we have and to new volunteer adults. We have sent information and consent forms accessibility and inclusive to all our unit. We have an open day at Guides at the end of March for all members of the local area to see what Guides is like and will offer this to anyone whom joins so they won't miss out. We have many disabilities in the unit and after contacting the provider have ensured that they will be able to take part in all the activities provided we are adaptable and always ensure each Guide in our care has the same fun experience. And wish to make it affordable by explaining to adults the maximum cost so no hidden or additional costs. But with the aim for it to be reduced with your help. <http://www.girlguidingsouthwest.org.uk/events-and-training.html#wimbleball>The cost of the ticket per Guide is 155 including transport food badges and activities is all included our own camp equipment which we fundraiser for is provided as accommodation. We have a lot of low income families in the unit and to pay this for one weekend may stop them applying. We wish to drop the cost per Guide with the help of a Grant and would be extremely grateful.

We will complete an evaluation form from the Guides and Leaders. We will take pictures all along and the Guides have said they are willing to come and do a talk at a Council meeting on the fun they had. Making a presentation if you would like. I undertook my camp licence last year taking 13 guides away to a local Guide hut. event after that I have seen improvement in the guides behaviour. The large-scale event will do this for the Guides and will be able to see the improvement in their organisation and communication skills.

Amesbury LYN met on 9th March 2018 and recommend that the area board award this funding.

Report Author:

Dave Roberts Amesbury CEM

Dave.roberts@wiltshire.gov.uk

Summary of LYN funding for 2017 / 2018

For the financial year 2017 / 2018, Wiltshire Council delegated £24, 285 to Amesbury Area Board for positive activities for young people. This has been used to support 5 different projects across the community area and has also levered in a total of £126,000 from the partner organisations.

In addition to this the Local Youth Network has met on 6 different occasions to determine funding for projects, look at key issues across the community area, support voluntary groups and held a LYN area board event with around 100 school pupils from Stonehenge School and Avon Valley College.

A summary of LYN Event

The purpose of this conference was to seek the views of young people 13 to 19 years of age growing up in Amesbury Community Area on the following issues:

Cyberbullying, keeping safe, diversity, volunteering, mental health and leisure.

Approximately 100 pupils from Stonehenge School and Avon Valley College were joined by members of Wiltshire Council's Amesbury Area Board, Wiltshire Police and other professionals.

Attendees were split into the categories mentioned above. These groups were facilitated by a professional from the appropriate discipline. Each pupil had the opportunity to attend all six workshops on a round-robin basis.

Summary of points raised by each group

Cyberbullying

Porn, SPAM, Social media, many different ways to be bullied, not always easy to identify initially, easy to get sucked in.

Good things about internet – social media, music, school work

Worst things about internet – bullying

How do we support people?

Keeping safe

Being home alone - Don't answer the door until you know who it is. Ask for ID, safety chains on doors.

Local park - Know your location, go with people you know and trust, know your safe route home, let people know where you are going, let people know what time to expect you home.

Knives – Do not ever carry one. There is never a reason, always call the police, never tolerate knife crime.

Mobiles – They are a good thing but misuse can also be bad, while on the phone and walking you are not aware of what is going on around you, pressure of social media.

Concern about anti-social behaviour at some parks.

Diversity

We are all different but this is what we have in common, diversity is not always visible, we benefit from having a diverse community, need more education and awareness about diversity.

Things that effect the way we feel and sometimes treated. Age, colour of skin, sexual orientation, size, income, gender, looks, the way we dress, ethnicity, disabilities, academic ability, religion,

Need more awareness and understanding.

Volunteering

More help for the elderly, link school and nursery for homework sessions, lunch time clubs for older people, litter picks, helping neighbours, life, closer links with local businesses, helping disadvantaged groups, help wanted signs, more people want to help but do not know how to, build volunteering into school. People knew how to get involved but more would volunteer especially with the elderly if a scheme was put under their noses i.e. at a school in a break. Needs someone to kick start this off and I reckon you could get some traction.

Mental health

The main causes of stress and anxiety are school pressure, home life, bullying, loneliness, having no-one to listen. We need to know where to seek help. The majority of people know someone who suffers with mental health, has experienced trauma, school pressure and constant testing, and/or bullying in any form. We need to hear about mental health problems and how to stay healthy in order to tackle stigma. We need to talk about mental health. This could include events, assemblies, talks, awareness raising activities. We need more professional support from trained staff. We need more peer support, including mentoring, in school.

Top points:

Peer pressure and bullying. More professional trained support. Emotional wellbeing – more awareness about mental health. School/ home pressure- more reassurance from school staff to reduce stress.

Leisure

Transport is an issue especially for people in villages. Facilities are dated. Needs more investment. Prices are an issue for most YP. Need more and better access to clubs.

Next Steps

We will identify any priorities or areas where we can carry out some partnership working.

We can then meet with partners to explore what action we can take, and where possible we could identify some area board funding to work on identified priorities. We can feed any ideas into the Joint Strategic Assessment and make WC aware that these are priorities.

Work closer with schools and other partners to have a joined-up approach.

Amesbury Area Board met shortly after this event and awarded funding to God Unlimited (GUL).

Young people were on the LYN panel that made recommendations to the area board and made links with the LYN event and what was being offered under this project banner.

Below is a summary of what has been achieved by the organisations who have received area board funding.

Amesbury Youth Café

101 Youth Cafe Sessions (Open Access)

26 Additional Cafe Session (Targeted)

Organised a Skatejam

Took part in the Amesbury Festival of Youth

Took part in Amesbury Carnival

Performed 400 hours of pastoral youth work

We led the Amesbury Youth Forum

We held the following special events:

2 comedy nights, 1 magic/illusionist night, 1 Live Guitar Musician Cabaret, 6 Disco led parties, a Retro Cinema Roll in Movie night (drive in movie for skateboards and scooters).

3 Barbecues at various rec grounds in Amesbury

We attended Salisbury Carnival, a Theatre night, A community Theatre Evening,

Over 150 individuals have attended the Youth Cafe. Averaging 18 people a night.

We have delivered training and induction in safeguarding, food safety and first aid to 8 volunteers.

Shrewton Youth Club

The year of 2017 has seen the Shrewton Youth again being extremely popular with our young people.

Sadly, our Youth Leader (Jenny Bowley) had to resign because of health reasons towards the end of the year but we can report that Abbie Edwards has now accepted the role. This appointment has proved extremely popular with the young people. Helpers at each session number two adults and the Club Committee numbers five.

The Club has its own website and its new logo was designed by one of the young members.

The club meets once a week and during the year averages between 15 to 20 members. We encourage the involvement of pupils from Appleford School and they are occasional visitors boosting numbers.

We aspire to ensure each evening, though informal, nevertheless includes an activity that is fun, perhaps active, confidence building and encourages friendships and new experiences. Friendships and dynamics of groupings over the age range of 11 to 16 are interesting but we have achieved some success in this.

A summary of some activities over the year - Cooking (Healthy eating and new tastes) Arts Sessions including a very popular Graffiti programme, Music and Song writing, Evening trips to Better Extreme, Bowling and Laser Quest.

The young people understand that they own their club and need to contribute to its success. This they have achieved through three fundraising activities during the year - A Jumble Sale/ Bingo Evening/Sponsored Walk.

Wiltshire Council and Shrewton Parish Council funding is important to the underpinning of the club finances and the club is extremely grateful for the opportunity for grants. Much of which stays within the County as it generally covers fees for local providers and rent,

Durrington Youth Services

Through funds received between April 2017 – March 2018, Durrington Youth Services (now known as 'Community Youth Services') has provided a total of 128 sessions for young people, a total of 254 hours.

This has been achieved by providing 4 different sessions:

- 1) The Bridging Project
- 2) Junior Youth Session
- 3) Senior Youth Session
- 4) Street Based Youth Work (SBYW)

Our youth provisions and location has changed a lot over the year. We have been presented with many challenges out of our control but out of the changes has come new and different sessions such as SBYW.

THE BRIDGING PROJECT closed at the end of December 2017 due to a lack of members, making it financially unfeasible to continue. We had 2 members with only 1 member attending regularly.

THE JUNIOR SESSIONS which were targeted at young people in year groups 7 to 9 also closed but was merged with the senior sessions. This was due to having to move from our premises at The Ham Centre to Bulford Village Hall. The Hall was only available for hire twice a week when we moved in October. We were welcoming on average 15 YP per session. These sessions provided a good continuation of youth provisions. We have unfortunately lost the majority of our members as an outcome of having to merge the sessions, with only 6 YP joining us in Bulford out of a possible 25.

THE SENIOR SESSIONS which is now a generic session for young people in year groups 7 – aged 19 has continued to be extremely successful. We have been overwhelmed by the commitment and support from young people with our recent move to Bulford with ALL of them joining us there. On average, we welcome 30 YP per session. More recently we have 30+ and 40+ attendees with a regular flow of new members.

THE SBYW SESSIONS were introduced in October with the purpose of continuing engagement with young people in Durrington in light of our move to Bulford leaving no youth provisions in Durrington. We were also aware of reports of anti-social behaviour in specific areas in Durrington.

From October – December these sessions were self-funded. This provision has recently been awarded funds from Wiltshire council to see us through from January to December 2018.

Our attendees have been variable per session, this may be due to the winter months. On average, we engage with 5 YP per session, we have engaged with 40 YP in total.

During these sessions we provide Information, advice and guidance on a range of issues relevant to young people. Issues such as; Anti-Social Behaviour; Drugs; alcohol addiction; smoking; sex and relationships; mental health issues; laws; education; driving; community issues and much more.

We have available the use of the Multi Use Games Area (MUGA) which the young people have used twice for football.

Young people have had the opportunity to voice their opinions and solutions at a community meeting held about Anti-Social Behaviour. Their views were represented at the meeting. The Local Police came out during one of our SBYW sessions to feedback alongside youth workers the outcomes from that meeting. Good community working.

PROVIDED DURING CENTRE BASED SESSIONS

We provide a range of activities and resources for young people to utilise during the session. Informal education, advice and support is provided on a range of issues such as; Drugs; alcohol addiction; smoking; sex and relationships; a range of mental health issues such as anxiety disorders and self-harming; laws; education; homelessness; death and suicide; community issues and much more.

Young people often choose to cook or bake during the session.

Ultimately, we provide a safe and welcoming environment for young people to be young people.

We have a couple of young people that have been actively involved in the LYN. They have been proactive in providing a vital link between the school council and the LYN, supporting Darren Henry. More recently they produced a poster advertising and promoting the LYN and attended the LYN event held at Avon Valley College.

We also had 2 young people that were supporting another youth session in Durrington as peer mentors.

A large group of our members support the local Bluez Discos held 4 times a year in Durrington.

Splash

Since Splash was awarded the grant in July 2017 we have been able to provide the following for young people from the Amesbury LYN area:

4 free, fun, activities specifically for young people from the area who are facing challenges, accommodating 48 places on local positive activities during 4 school holiday periods. The activities delivered were Rythmmania, Fun 1st Aid, Generation Code and Generation code advanced.

Rythmmania is a fun, music making session using tubes and young people's imaginations.

Generation Code and Generation code advanced are micro bit coding sessions which have proved very popular.

We have also accommodated a further 74 places for young people from the area on activities slightly further afield, providing free minibus pick-ups from the area for 7 more activities.

Our latest parent/guardian survey results recorded the following impact on those that have attended Splash activities:

Self-esteem - feeling of pride and self-worth	93%
Self-confidence - belief in themselves and their abilities	91%
Attitude & behaviour - towards you & others	82%
Social skills - communication & interaction with yourself & others	90%

We were able to provide this amount of provision as we match funded the £2900 kindly awarded by the LYN.

GUL Outdoor Therapy

It has been an incredible year at Gul, we recorded over 20,000 hours of provision across the charity's two SP3 sites, of this 13,000 were supporting vulnerable people at our Bustard site with temporary accommodation. The remaining 7,000 hours were sessions provided at our Riverside (outdoor therapy) site. Each of Gul's sessions was an hour in length and supervised by a member of our team.

The Lyn Funding Gul has received has been focussed at our Riverside site. In the last financial year 343 young people from across the county attended Gul for a broad range of activities including Horse riding, stable management, alternative education provision, outdoor skills, bush craft, navigation and fitness. Since its last award (Jan 2018) Gul has helped two young people in extremely difficult family situations attend our provision, I have seen one of them during a session and the smile on her face was huge so please do convey our thanks for the support again.

On top of this figure, Gul has 15 young people who volunteer on a regular basis with whom we are currently organising a camp, which will take place during the summer holidays.

During the same period, Gul awarded over 200 participation rosettes and 141 riding qualifications including national coaching awards.

As an organisation, Gul supports the work of the LYN through an in-kind donation of the time of one of its management team.

AMESBURY COMMUNITY AREA TRANSPORT GROUP 05 MARCH 2018 ACTION NOTES

03	Item	Update	Actions and recommendations	Who
1.	Attendees and apologies			
	Present:	Roy Gould, Steven Cocking (Idmiston PC), Richard Harris (Shrewton PC), Roger Fisher, (Amesbury TC), Maureen Atkinson (Winterbourne PC), Graham Jenkins, Jackie Clark (Bulford PC), Richard Deakins (Durrington TC), Bill Thomas (Newton Tony PC)		
		Wiltshire Councillors Mike Hewitt (Chair), John Smale, Graham Wright, Robert Yuill		
		Principal Engineer Julie Wharton, Senior Engineer Kate Wysocki, Area Manager, Amesbury & Tidworth – Andy Cole, Community Engagement Manager – Dave Roberts		
	Apologies:			
2.	Notes of last meeting			
		The notes of the previous meeting were ratified at the Amesbury Area Board, 30 November 2017 . (click on link for webpage)		All
3.	Financial Position			
		The final finance sheet is appended, the current financial position – £13,768. NB: There is potentially £4000 previously allocated for street nameplates and £9,200 for the failed substantive bid in Shrewton on top of this amount, therefore this leaves a potential £26,968.	The Area board agrees that the sum set aside for Street Nameplates is to remain allocated for any future requests. £9,200 set aside for the substantive bid in Shrewton to be returned to	All

AMESBURY COMMUNITY AREA TRANSPORT GROUP 05 MARCH 2018 ACTION NOTES

			the budget.	
4.	Top 5 Priority Schemes			
a)	Issue 4053 High Street/A360 Shrewton – Lining works	The group agreed to fund the lining scheme at a cost of £2500. Plans are prepared, works to be ordered in new financial year.	Noted	JW
b)	5739 Boscombe Road, Amesbury. Request for Bus Clearway marking.	The group agreed to allocate £1000 to install two bus clearway markings on Boscombe Road and remove the redundant Bus Stops outside Christ the King School. Plans are prepared, works to be ordered in new financial year.	Noted	JW
c)	5743 Bulford Road, Durrington Request for bollards.	The group agreed to allocate £3000 for 15 bollards to be erected. Plans are prepared, works to be ordered in new financial year.	Noted	JW
d)	5759 Amesbury Road jcn A338. Visibility improvements	In the last 3 years there have been 3 collisions resulting in slight personal injury at this junction. All involved vehicles travelling on the A338. One involved a car carrying out an illegal overtaking manoeuvre (double white lines prevent this), the other two involved rear end collisions where the driver behind didn't see that the vehicle in front was slowing down. There is significant amount of warning signs already at this junction therefore it is unlikely that additional signage will be of assistance. The vegetation wasn't causing a significant problem when I visited, however it is winter and it is accepted that the signs will become hidden in the vegetation during the Summer. The PC can chase with the adjoining landowners/report via the App.	The Area Board approves the allocation of £3500 for the scheme to install horizontal bars around the "SLOW" markings, subject to confirmation from Newton Tony PC regarding the 25% contribution.	PC/KW

AMESBURY COMMUNITY AREA TRANSPORT GROUP 05 MARCH 2018 ACTION NOTES

		<p>One solution is to highlight the junction with a coloured surface. This is expensive and 100m either side would cost approximately £15,000-£20,000. It is also low priority for maintenance.</p> <p>Another less expensive option would be to install horizontal bars around the “SLOW” markings; an example is included at the end of the notes. This work would cost approximately £3500.</p> <p>The group discussed that vegetation had been cut back by the landowner and that the closure of Allington Track had increased the use of this junction. They agreed to allocate £3500 for the scheme to install horizontal bars around the “SLOW” markings.</p> <p>Newton Tony PC discuss and confirm whether or not they are prepared to make a 25% contribution.</p>		
e)	Flower Lane, Amesbury	<p>The width of the road at this location does not allow the installation of any type of bollard that would provide any protection to the property as requested by the resident. The solution very much depends on why the large vehicles are ending up in Flower Lane. If the vehicles are turning in mistakenly thinking that they can get through to the residential area then advance warning signs could be erected in the High Street.</p> <p>However it is more likely that the vehicles are going into Flower Lane to deliver to the businesses and parking legally/illegally. This is then making it difficult for large vehicles to manoeuvre. One possible solution would be to consider a loading ban and converting the parking bay to a loading bay.</p> <p>The group discussed and agreed with the above. Amesbury Town</p>	The Area Board notes the update.	CATG

AMESBURY COMMUNITY AREA TRANSPORT GROUP 05 MARCH 2018 ACTION NOTES

		Council is not in favour of a loading ban. The group felt that there was little that could be done to make a positive impact in this instance and therefore agreed not to progress the issue further.		
5.	Work instructed			
a)	Issue 4636 Old Road - SP4 0EQ Request for street light or illuminated bollard.	The work is complete, and the issue can be closed.	The Area Board notes the update and agrees to close the issue.	CATG
b)	Winterbourne Earls – Closure of the Fords	The work is 60% complete; contractors are currently awaiting delivery of the rest of the signs.	The Area Board notes the update.	JW
c)	4774 High Post Road, Netton. Measures to improve give way signing at the junction.	The work is complete and the issue can be closed.	The Area Board notes the update and agrees to close the issue.	CATG
e)	London Rd, Shrewton - Request for buildouts.	The substantive bid was unsuccessful. There is currently £9,200 set aside for this scheme.	The Area Board notes the update and agrees to close the issue.	CATG
	Issue 4545 Church Street, Winterbourne Stoke –waiting restrictions. Issue 4742 High Street/Salisbury Street. Amesbury. Reduce On street parking from one hour to 30 minutes. 5064 Durrington -Waiting restrictions	The work is complete, except for a small amount of remedial to be undertaken in Winterbourne Stoke.	The Area Board notes the update and agrees to close the issue.	CATG

AMESBURY COMMUNITY AREA TRANSPORT GROUP 05 MARCH 2018 ACTION NOTES

6.	Other Priority schemes			
a)	<p>4968</p> <p>Junction of The Portway & the A338 (SP4 6JL)</p> <p>Amendments to structure/signage in order to slow vehicles on approaches to the roundabout</p>	<p>Topo has been received – design can progress if made a top 5 priority. Potential scheme would be in the region of £15k-20k and would need a road closure at each arm to facilitate the work.</p> <p>The group agreed to make this a top 5 priority and progress preliminary designs and costings.</p>	<p>The Area Board notes the update and agrees to make it a top 5 priority.</p>	<p>KW</p>
b)	<p>5451</p> <p>Salisbury Road 3.5t weight limit except for loading</p>	<p>The group agreed to allocate £3000 towards a 3.5t HGV ban however post meeting I was informed that this needs to go through the Freight Assessment & Priority Mechanism (FAPM) led by the Transport Planning team on an annual basis. The group will need to nominate Salisbury Road as one of its roads for 2018/19. In the meantime the PC may wish to collect evidence of goods vehicles that are using the road, particularly those between 3.5t and 7.5t. The High Street, Shrewton was considered an exception as this was an unenforceable weight limit.</p> <p>The group expressed discontent with the FAPM process and asked that Spencer Drinkwater attend the next meeting to discuss weight limits.</p>	<p>The Area Board notes the update.</p>	<p>SD</p>
7.	New Requests / Issues			
a)	<p>5794</p> <p>Telegraph Hill/Salisbury Road, Bulford</p>	<p>At the bottom of the hill just entering the village it is dangerous if not impossible for 2 heavy vehicles to pass, e.g. double decker bus, articulated lorry, tracked vehicle.</p>	<p>The Area Board notes the update.</p>	<p>SD</p>

AMESBURY COMMUNITY AREA TRANSPORT GROUP 05 MARCH 2018 ACTION NOTES

	7.5t weight restriction	<p>This will need to go via the FAPM process as detailed in 6b.</p> <p>The group expressed discontent with the FAPM process and asked that Spencer Drinkwater attend the next meeting to discuss weight limits.</p>		
b)	<p>5899</p> <p>Bulford Road jcn Recreation Road, Durrington</p> <p>Stop junction.</p>	<p>There have recently been two accidents at the junction of Bulford road and Recreation Rd in Durrington. Also accidents at same junction Windsor Road side. These accidents were serious with real danger to pedestrians and drivers.</p> <p>This junction does not meet the visibility restrictions that allow a "Stop" junction to be introduced and there is good visibility of pedestrians crossing at the junction. No collisions involving personal injury recorded on the Police database for the previous 6 years.</p> <p>GW clarified that the issue is vehicles entering Bulford Road from Recreation Road not realising that it is such a busy road. The double yellow lines and give way markings are very worn and there is no give way sign. The group agreed to make this a top 5 priority and KW would look at the junction.</p>	The Area Board notes the update and agrees to make this a top 5 priority.	KW
c)	<p>5923</p> <p>Summerlug, Winterbourne</p> <p>Fence repairs.</p>	<p>Fence at Summerlug - the fence which is alongside a footway which serves the rear of several Housing properties is understood to be a Highways structure and under its remit to maintain. Wilts Council has been out and inspected the fence reported that whilst the fence is leaning slightly it is secure and therefore not a safety issue. The parish council however wish to see the fence repaired especially where some fence posts have rotted away at ground level.</p> <p>Repairs to this fence would be purely maintenance with no improvement involved therefore this would not be a CATG issue. AC</p>	The Area Board agrees to fund the scheme to repair the fence at a cost of £1000 subject to this being confirmed as appropriate use of the budget subject to confirmation from Winterbourne PC with regards to their 25% contribution and this being	CATG

AMESBURY COMMUNITY AREA TRANSPORT GROUP 05 MARCH 2018 ACTION NOTES

		informed the group that Tidworth CATG allocate money to repairs such as this and therefore the group agreed to allocate £1000 to carry out improvements subject to this being confirmed as appropriate spend of the budget.	confirmed as appropriate spend of the CATG's budget.	
d)	5924 A338, Winterbourne Bollards to prevent parking on verge.	<p>Winterbourne Parish Council would like to request an item to be included at the next CATG meeting - the PC is concerned about vehicles being parked on the grass verge to the right of the bus shelter at Summerlug - we understand that this area is under the jurisdiction of Wilts Council. The PC has suggested placing bollards at the site with funding sought from the CATG for the bollards WPC prepared to contribute if necessary applicable.</p> <p>This would cost approximately £4000 depending on the type and number of bollards to be installed.</p> <p>The group agreed to proceed with the scheme, KW to draw up plans and confirm costs.</p>	The Area Board agrees to fund the scheme to install bollards at a cost of £4000 and makes this a top 5 priority subject to confirmation from Winterbourne PC with regards to their 25% contribution.	CATG
e)	5960 Stockport Avenue, Amesbury – Bus Shelter	<p>Town Council would like to request a bus shelter to be installed on west side of Stockport Avenue between White Lands and Muggleton Roundabouts.</p> <p>New bus shelters are only installed if the Parish/Town Council agree to take on any future maintenance, further details of location required.</p> <p>Town Council to confirm whether or not they are prepared to take on the maintenance of the bus shelter in the future, if so KW to meet with Roger Fisher to discuss further.</p>	The Area Board notes the update.	KW/ TC

AMESBURY COMMUNITY AREA TRANSPORT GROUP 05 MARCH 2018 ACTION NOTES

8.	Requests for Waiting Restrictions			
a)	5738 Stockport Road, Amesbury No waiting at any time.	Request for double yellow lines to be marked from the roundabout to the layby. £1000 for order/£250 (+share of establishment fee) for works. The group requested more information and discussed progressing one set of traffic orders for waiting restrictions a year.	See 8e	KW
b)	5740 Fairfax Close, Amesbury. No waiting at any time.	Double yellow lines to be painted from the entrance to Fairfax Close to start of right hand bend and repaint the white junction markings at the end of Fairfax Close on to High Street. £1000 for order/£250 (+share of establishment fee) for works. The group requested more information and discussed progressing one set of traffic orders for waiting restrictions a year.	See 8e	KW
c)	5958 Salisbury Street, Amesbury No loading at any time.	Loading ban in Salisbury Street from junction with Flower Lane to loading bay outside Haine & Smith. Drivers with a disabled badge are parking on double yellow lines preventing the loading bay being used by lorries with tail lift. £1000 for order/£1000 (+share of establishment fee) for works.	See 8e	KW
d)	5962 Meridian Way & Sunrise Way, Amesbury No waiting at any time.	Lorries parking on roads around solstice parking effecting businesses and road users including ambulance service. Double yellow lines painted on both sides of Meridian Way and Sunrise Way. Homes Bargains/ T J Morris have agreed to pay for the double yellow lines. £1000 for order/£2000 (+share of establishment fee) for works.	See 8e	KW
e)	5959 Mills Way, Amesbury No waiting at any time.	Mills Way is becoming increasingly busy with vehicles especially lorries using the Hills Waste Depot at the bottom of the hill. Vehicles from surrounding businesses and residents of Fairview Park are using Mills Way as an overflow car park. Vehicles are parking on a tight right hand bend that is also on a hill which prevents sight of oncoming vehicles in your lane having to overtake parked vehicles.	The Area Board to discuss whether to wait for the town Centre review to take place or progress these individually at a cost of £7,000.	KW

AMESBURY COMMUNITY AREA TRANSPORT GROUP 05 MARCH 2018 ACTION NOTES

		<p>Double yellow lines painted on both sides of Mills Way. £1000 for order/£1000 (+share of establishment fee) for works.</p> <p>The group agreed to progress the waiting restrictions in Amesbury rather than wait for the outcome of the Network Management Assessment. Total cost to be approximately £1500 for the legal order, £5,500 for the works. The CATG agreed to make this a top 5 priority.</p> <p><i>Post meeting note: It has been indicated by Network Management Team that a review of waiting restrictions will take place in Amesbury in 2018/19. In light of this it would make sense for these restrictions to be completed via that process (This would all be funded centrally) – to discuss at the Area Board meeting.</i></p>		
f)	<p>5795</p> <p>A3028 Double Hedges No waiting at any time</p>	<p>A new path has been introduced between Bulford and Solstice Park Amesbury. Accordingly the approach pavement at the Bulford end has been widened parking bays marked on the opposite side of the road and a preferred crossing installed. People are now parking half on the kerb adjacent to this crossing vert near to the junction which is particularly dangerous.</p> <p>Double Yellow lines introduced alongside the full length of the widened pavement. £1000 for order £1150 for works.</p> <p>BPC asked for this scheme to be put on hold until the outcome of discussions with DIO regarding S106 works in the village.</p>	The Area Board notes the update.	BPC

AMESBURY COMMUNITY AREA TRANSPORT GROUP 05 MARCH 2018 ACTION NOTES

9.	Any other business			
a)	Street Nameplates	<p>The group agreed to proceed with the following Street Nameplates at a cost of approximately £3250 and agreed to allocate the remaining £1750 for future applicants.</p> <p>Idmiston – Church Road/Idmiston Road Winterbourne - Vicarage Lane, Highpost Road (both ends) West (Amesbury) end of Down Barn Road. Durrington – Windsor Mews Bulford – Salisbury Road x 3, Newmans Way, The Leaze, Dukes Way</p>	The Area Board notes the update.	AC
b)	Footway maintenance	The work is all complete.	The Area Board notes the update.	
c)	Highway Investment Scheme	<p>The information sets out the Major Maintenance programme for 2018/19 on the basis of two funding scenarios. The first scenario is Department of Transport Maintenance Block, the second with the addition of the Local Highways Investment Fund 2014 - 2020. This is explained more fully in the attached main report. The CATG's are being asked to comment on the proposed areas of work identified in Appendix 4A (List by Community area) and 4B (maps by Community Area) and put forward any alternative suggestions for consideration. It should be borne in mind that any alternatives would be in place of schemes already identified not in addition to. You are also invited to put forward suggestions for schemes for future years.</p> <p>Please could I ask that through your local contacts you circulate the attachments and allow a period of discussion at the next CATG meeting. Any feedback and suggestions should be directed to peter.binley@wiltshire.gov.uk</p>	The Area Board notes the update.	

AMESBURY COMMUNITY AREA TRANSPORT GROUP 05 MARCH 2018 ACTION NOTES

		The group discussed the report and agreed that they felt frustrated that it appeared to be little more than a box ticking exercise. As the group is not recommending any changes this will not need to go to the AB for discussion.		
d)	Change of Engineer	<p>In future Kate Wysocki, Senior Traffic Engineer will provide technical assistance to the group and can be contacted kate.wysocki@wiltshire.gov.uk.</p> <p>Issues for CATG should continue to be raised via the Area Board issues system, which can be found here; http://services.wiltshire.gov.uk/Forms/area_board/report_issue.php?area_board=Amesbury</p> <p>Any maintenance issues should continue to be raised via the MyWiltsApp.</p>		
10.	Date of Next Meeting:	18 June 2018, 10am, Redworth Centre, Amesbury Leisure Centre, Amesbury		

Amesbury Community Area Transport Group

Principal Engineer – Julie Watts

1. Environmental & Community Implications

1.1. Environmental and community implications were considered by the CATG during their deliberations. The funding of projects will contribute to the continuance and/or improvement of environmental, social and community wellbeing in the community area, the extent and specifics of which will be dependent upon the individual project.

2. Financial Implications

2.1. All decisions must fall within the Highways funding allocated to Amesbury Area Board.

2.2. If funding is allocated in line with CATG recommendations outlined in this report, and all relevant 3rd party contributions are confirmed, Amesbury Area Board will have a remaining Highways funding balance of **£10,686.00**.

3. Legal Implications

3.1. There are no specific legal implications related to this report.

4. HR Implications

4.1. There are no specific HR implications related to this report.

5. Equality and Inclusion Implications

5.1 The schemes recommended to the Area Board will improve road safety for all users of the highway.

6. Safeguarding implications

6.1 There are no specific safeguarding implications related to this report.

Amesbury CATG

FINANCIAL SUMMARY

BUDGET 2017-18

£17,731.00 CATG ALLOCATION 2016-17

£32,776.00 2015-16 underspend

Contributions

£1,050.00 Shrewton PC (weight limit & TRO)(received)
£250.00 Winterbourne Stoke PC (Waiting Restrictions) to be issued
£550.00 Great Wishford PC (20mph) Received
£1,500.00 Amesbury TC Part 2 (Contribution for 30 minute parking) issued
£1,220.00 Durrington TC for waiting restrictions issued
£100.00 Netton PC for High Post Road Bollards Received
£250.00 Winterbourne PC for Summerlug Fence Repairs
£1,000.00 Winterbourne PC for A338 Bollards
£875.00 Newton Tony PC for A338 Amesbury Rd Cross Roads

Total Budget 2017-18

£57,302.00

Commitments carried forward from 2016-17

Shrewton sign removal £61.00 Actual
Winterbourne Earls Restricted access at fords £3,500 Estimate
Great Wishford 20mph Implementation £5,000 Actual
Shrewton London Road buildouts - Topo Survey £3,300 Actual
Amesbury Town Centre waiting restrictions part 2 £1,656 Actual
Winterbourne Stoke Church Street Waiting Restrictions £1,001 Actual
Durrington Waiting restrictions £1,220 Actual
Cholderton, Old Road - Additional Measures £1,065 Actual
Netton High Post road bollards £1,413 Actual

New Schemes

A338 Portway Roundabout topo £1,400 Estimate
Amesbury Boscombe Road - Bus Clearway marking £1,000 Estimate
Durrington, Bulford Road - Bollards £3,000 Estimate
Street namplates £5,000 Estimate
Shrewton, High Street/A360 - Lining £2,500 Estimate
Amesbury Waiting Restrictions £7,000 Estimate
A338 Winterbourne - Bollards £4,000 Estimate
A338 Winterbourne - Fence Repair £1,000 Estimate
A338 Amesbury Road Crossroads £3,500 Estimate

Total commitment 2017-18 **£46,616.00**

Remaining Budget 2017-18 **£10,686.00**

Wiltshire Council

Area Board

March 2018

Subject: Road Surfacing Programme 2018/19

Cabinet Member: Councillor Bridget Wayman - Highways, Transport and Waste

Key Decision: No

Executive Summary

The local highway network is vital for businesses and communities, and effective maintenance to ensure its availability is essential to the economic development of the county. Wiltshire Council recognises the importance of maintaining and managing its highway network effectively.

There has been under investment in highways maintenance nationally for many years. The significant investment of £21 million annually in recent years by Wiltshire Council has seen a large number of roads treated, with a substantial improvement in the overall condition of the county's road network (see **Appendix 1**).

The overall condition of Wiltshire's roads compares favourably with the national average and the south-west average road conditions.

The Council's approved capital budget for road surfacing and related work in 2018/19 is £16,139,000. It is proposed to carry out resurfacing and other treatments at over 100 sites this year (see **Appendices 2 and 3**), which vary in both size and type. There are also a large number of skid resistance sites to be treated this year, which are required in order to keep the roads safe. They consist of various treatments, including surface retexturing and resurfacing. The proposed expenditure in each area is broadly proportional to the lengths of road within the individual Area Boards.

A number of schemes have been identified which has not been possible to include this year, but which could be considered for implementation in future years. These have been listed for information, but at present it is not possible to state with certainty when it will be possible to treat them.

A budget of £2,500,000 has been included for carrying out smaller repairs at localised areas where safety defects are identified, or where road conditions are causing safety concerns.

With an extensive road network and aging infrastructure there is a need to plan for long term asset renewal. Good progress has been made on reducing the road maintenance backlog in recent years, but other highway assets, including street lighting, safety fences, road signs, footways and traffic signals will need investment to keep them safe in the future and to avoid expensive unplanned emergency repairs. The Council's new

Highways Infrastructure Asset Management System (HIAMS) will be used to develop a forward programme of resurfacing work for the next five years, to ensure value for money and use whole life costing for the highways asset.

Proposals

It is recommended that the Area Board:

- (i) Acknowledges that there has been a substantial improvement in the overall condition of Wiltshire's roads in recent years, but further investment is still required.
- (ii) Approves the highway maintenance scheme list for this community area in 2018/19 prepared for the Area Board.
- (iii) Notes that a new five year programme will be developed shortly, making use of the Council's new Highways Infrastructure Asset Management System (HIAMS), to ensure best value for money and whole life costing for the highways asset.

Reason for Proposals

The highway network forms the Council's largest asset, and it is important that it is maintained in the most cost-effective way that demonstrates value for money. This includes the use of asset management and whole life costing approaches to inform investment decisions.

Asset management principles have been applied for many years in Wiltshire to ensure that there is appropriate investment with longer term planning for the management of the highways assets.

Alistair Cunningham
Corporate Director

Wiltshire Council

Area Board

March 2018

Subject: Road Surfacing Programme 2018/19

Cabinet Member: Councillor Bridget Wayman - Highways, Transport and Waste

Key Decision: No

Purpose of Report

1. To provide information on the progress made in improving the condition of the county's roads, and advise on the road surfacing schemes to be undertaken in 2018/19.

Relevance to the Council's Business Plan

2. The Wiltshire Council Business Plan 2017 – 2027 sets out the vision to create strong communities, with priorities for growing the economy, strong communities and protecting the vulnerable. As part of growing the economy it is acknowledged that it is necessary to bring the county's roads up to an acceptable state. The goal is that road infrastructure is improved and to:
 - Improve asset management and the use of investment to improve the condition of Wiltshire roads (implementing our Highways Asset Management Strategy).
 - Promote and further development the MyWiltshire app to improve and increase the reporting of issues.

Background

3. The local highway network in Wiltshire comprises over 4,400 kilometres of road and is vital for businesses and communities. Effective maintenance to ensure its availability is essential to the economic development of the county. Wiltshire Council recognises the importance of maintaining and managing its highway network effectively, and has been making a significant investment in improving the condition of its highway assets in recent years.
4. The condition of the county's roads is important to the public. This is demonstrated by the results of previous People's Voice surveys and the annual National Highways and Transportation (NHT) surveys, which indicate low levels of public satisfaction with road conditions nationally and in Wiltshire.
5. This report provides a summary of the progress to date on improving the condition of the county's roads, and the proposed road surfacing on the Council's current highway investment programme.

Main Considerations for the Council

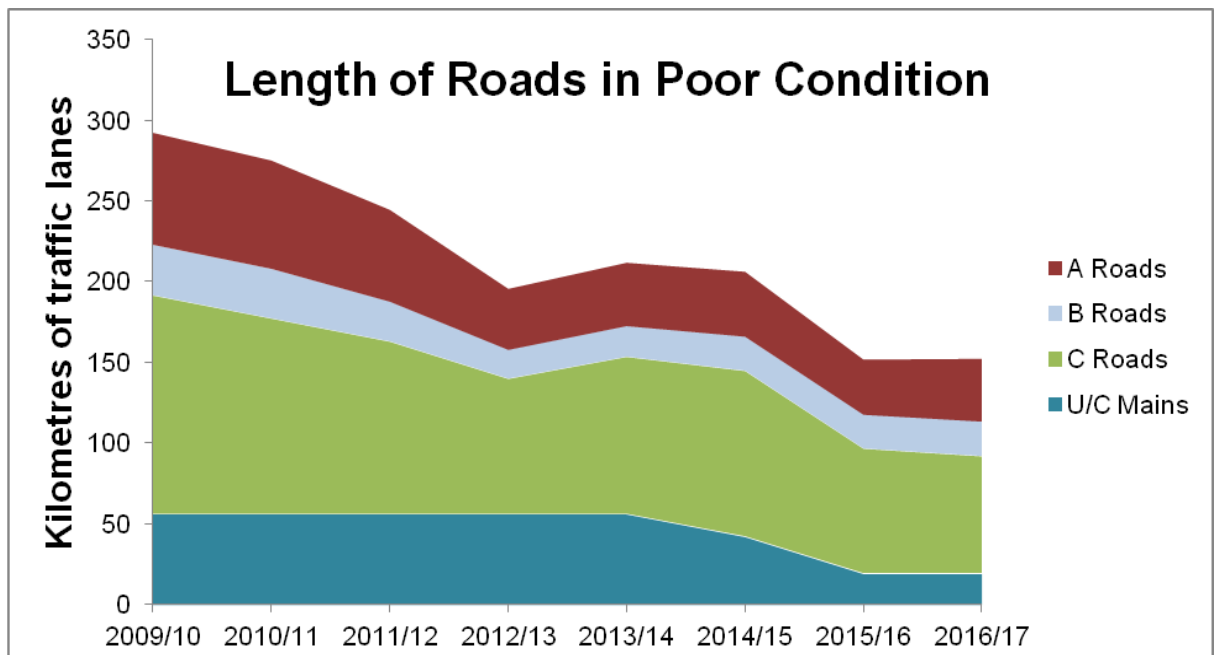
Local Highways Investment Fund 2014 – 2020

6. The 'Local Highways Investment Fund 2014 – 2020' was intended to address the longstanding under investment in highways maintenance and the consequent backlog, which has been a problem nationally for many years. The Council's major programme of investment in highway maintenance was originally proposed to be over six years to deliver a significant improvement in the condition of the county's highway network.
7. The programme has just completed its fourth year, and there has been a substantial amount of work completed, with an overall improvement in the county's road conditions. The investment was initially targeted at those roads in worst condition, especially the main roads, and the approach was expanded last year to include more preventative maintenance on the minor roads and renewal of footways.
8. Nearly all of the schemes in the 2017/18 programme have been completed. There have been a few minor roads which formed part of the surface dressing programme which have not been completed because of the need for particular equipment. These are being programmed for early next year. The programme of footway renewal and reactive carriageway repairs is currently being completed.
9. At the start of the investment programme it was intended that the investment should be used to improve approximately 664 kilometres of the network (about 15% of the total road length). As some of the roads will continue to deteriorate during this period a greater proportion of the network has to be treated to achieve the overall improvement target at the end of the period.
10. In the first year of the investment there were a number of sites which needed major reconstruction work and the lengths of road treated were less than originally envisaged. A substantial programme of surface dressing of mainly rural roads has been undertaken in recent years, and the total lengths of road resurfaced have increased considerably.

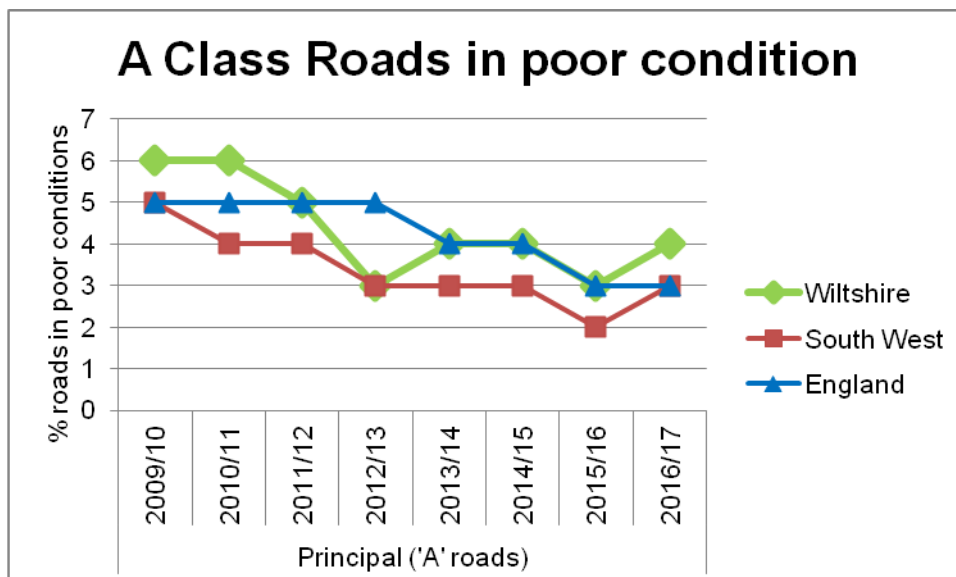
Year	Length treated (kilometres)
2014/15	148
2015/16	182
2016/17	250
2017/18	181
Total	761

11. A total of 761 kilometres of road have been resurfaced since 2014, which is about 17% of the network. There have also been a significant number of smaller sites treated with hand patching and repairs to address localised areas in poor condition.
12. The detailed calculation of the backlog carried out by the Council's specialist consultants, WDM, indicates that there has been a significant reduction of 30% in the backlog since the start of the programme with the backlog reducing from an estimated £69.4 million to £48.2 million.

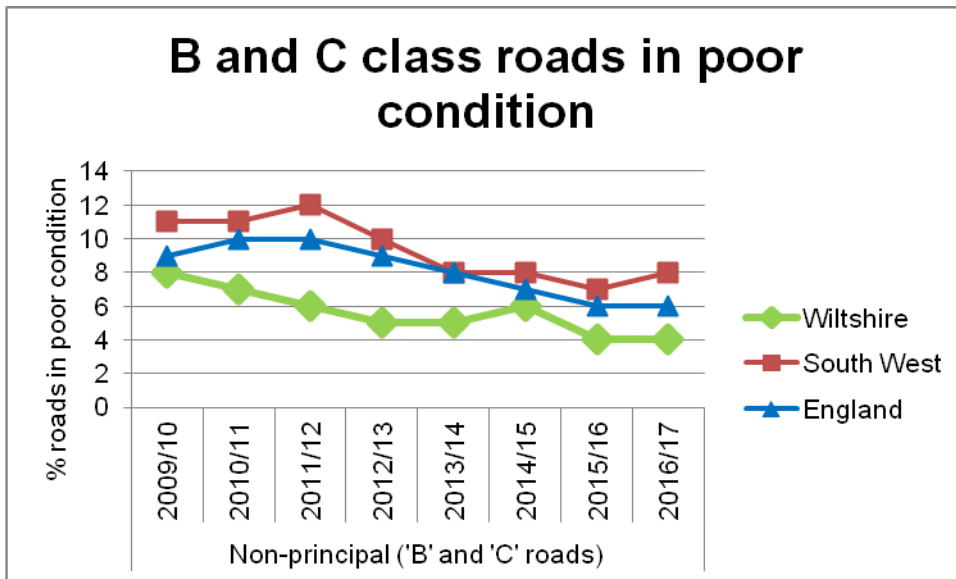
13. There has been a significant reduction in the length of road in Wiltshire in poor condition, which has almost halved since 2009. This has been largely due to the additional funding provided by the Council, especially in recent years through the Local Highways Investment Fund.



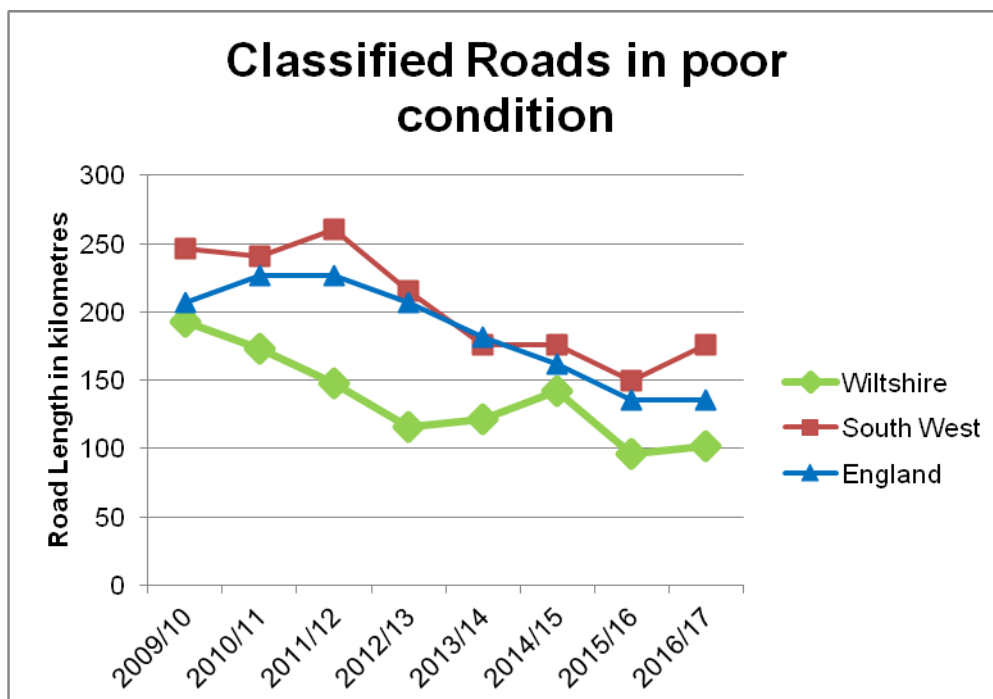
14. The condition of A roads has improved nationally since 2009 from 5% in poor condition to 3% in 2016/17 (Note - Low percentages are good). In Wiltshire the A class roads in poor condition have reduced by the same amount, but this year they have risen slightly above the national and south-west average at 4%.



15. The B and C class roads represent 45% of the road network by length in Wiltshire. This is a large proportion of the network. Keeping these roads in good condition is important to the local communities, and requires substantial investment.



16. The B and C class road conditions in Wiltshire are much better than the national and south-west averages, with 4% in poor condition, which is half the south west average of 8%, and better than the national average of 6% for these types of roads.
17. If the condition of classified roads (A, B and C class roads) in Wiltshire had followed the national or south-west averages, the roads would be in appreciably worse condition than they are now. The graph below shows the actual lengths of road in poor condition in Wiltshire by year, and what the lengths would have been if Wiltshire's roads were in the same condition as the national or south-west average condition (i.e. there would be more in poor condition).



18. The condition of the unclassified roads is more difficult to compare as the assessment methods are not necessarily consistent across authorities. In general terms the condition of the more important unclassified roads in Wiltshire compares well with those of similar authorities in the south west, but further assessment would be required to get a better understanding of minor road conditions across the south west.

19. Since 2009 the roads in Wiltshire, particularly the classified roads, have been improved more than those in the south-west, and they are in better condition than the national average.
20. The changing road conditions in each of the Area Boards between 2009 and 2017 are shown in **Appendix 1**. This is based on the road lane length considered to be in poor condition using the road condition survey data. The graphs show that overall there has been an improvement in all of the areas during that time.

Surfacing Schemes for 2018/19

21. The Council's approved capital budget for road surfacing in 2018/19 is £16,139,000, which is less than the £21,000,000 it has been in recent years. As a result it will not be possible to treat as many sites as had been originally envisaged. However, it is still proposed to carry out resurfacing and other treatments at over 100 sites this year (see **Appendices 2 and 3**).
22. The identified sites vary in both size and type. The proposed expenditure in each area is broadly proportional to the lengths of road within the individual Area Boards. A number of schemes have been identified which it has not been possible to include this year, but which could be considered for treatment in future years. These have been listed for information, but at present it is not possible to state when it will be possible to treat these sites.
23. There are also a large number of skid resistance sites to be treated this year, which are required in order to keep the roads safe. They consist of various treatments including surface retexturing and resurfacing.
24. A budget of £2,500,000 has been included for carrying out smaller repairs at localised areas. These repairs will be carried out where safety defects are identified, or where road conditions are causing safety concerns.
25. The Council carries out a large programme of highway drainage improvements funded from the highways maintenance budget to keep the roads safe and to protect the highway asset. Funding is also required to replace life-expired street lights, traffic signals, road signs and other highway infrastructure. A separate budget of £3,000,000 is provided for renewal, replacement and maintenance of the county's bridges and structures to keep them safe.
26. A substantial budget of £1,250,000 was included in 2017/18 for footway resurfacing and renewal, and a further £150,000 was made available for the Area Boards to prioritise footway improvements or maintenance. In view of the reduced budget for 2018/19 it has not been possible to include similar schemes in this year's programme, and generally footway works will need to be restricted to treating safety defects this year.

Future Proposals

27. The funding levels for road resurfacing and related work in Wiltshire have been proportionally higher than for most authorities in recent years because of the additional funding provided by this Council. The reduced budget in 2018/19 is likely to be a challenge as work is going to have to be increasingly focused on keeping the network safe, and there will be less scope for dealing with less urgent sites. Road safety on the network will continue to be the priority.

28. Progress on the six year programme identified in 2013 has been reported annually to the Area Boards, and the programme has been substantially completed. However, there are still a number of sites which were included in the original programme, or have subsequently been suggested for treatment, which have yet to be completed.
29. The Council's new Highways Infrastructure Asset Management System (HIAMS) will be used to help derive a future works programme to ensure best value for money and whole life costing for the highways asset. It is proposed that a new five year programme will be developed shortly, making use of the existing road condition data and predicted deterioration rates. The new system provides the opportunity to carry out more detailed calculations regarding road conditions and deterioration to inform investment decisions.
30. With an extensive road network and aging infrastructure there is a need to plan for long term asset renewal. Good progress has been made on reducing the road maintenance backlog in recent years, but further work is still required and other assets, including street lighting, safety fences, road signs, traffic signals and bridges, will need continued investment to keep them safe and to avoid unplanned emergency repairs in the future.

Safeguarding Implications

31. None.

Public Health Implications

32. The condition of roads and related infrastructure can have serious safety implications, especially with regard to skid resistance. Keeping roads in good condition can help with reducing accidents. Roads, bridges, highway structures, signs and street lighting need to be kept in good condition in order to protect the public and those maintaining the assets.

Corporate Procurement Implications

33. There are no procurement implications at this stage.

Equalities Impact of the Proposal

34. The improved maintenance of the highway network, its management using sound asset management principles, and good performance by the highways contractors, should benefit all road users, including public transport, and vulnerable road users such as cyclists and pedestrians.

Environmental and Climate Change Considerations

35. The effects of climate change could be significant for the highway network. There was considerable damage to the roads, footways and drainage systems in the flooding of 2014, and such events could be repeated. Having robust maintenance and investment strategies to improve the condition of the network helps build resilience into the highway network and the infrastructure.

36. Where possible, suitable materials arising from road resurfacing schemes are recycled. Large quantities of road planings are used on rights of way to repair damage and on county farms, or provided to community groups. The presence of tar bound materials in older carriageways has caused problems on some sites as it has to be disposed of as contaminated waste, with consequent cost implications. Options for in-situ and other recycling processes are being progressed where viable in order to increase the recycling of highway materials.
37. The use of 'warm' asphalt for surfacing on the network in Wiltshire has increased significantly in recent years. The material has proved durable and the process produces less carbon than traditional methods.

Risk Assessment

38. The application of good asset management principles, the planned maintenance of the highway infrastructure, and the establishment of formalised asset management policies help reduce the risk of incidents and claims.

Risks that may arise if the proposed decision and related work is not taken

39. There is a risk of increased collisions, claims and public dissatisfaction if highway maintenance is not carried out. The principles of asset management have been followed by this Council for many years, and there is a need to continue to demonstrate best practise and obtain best value for money. Future DfT funding will be dependent on demonstrating the application of good asset management principles. Failure to do so will result in reduced funding in future years.

Risks that may arise if the proposed decision is taken and actions that will be taken to manage these risks

40. It is important to ensure that highways asset management and service delivery are implemented effectively. Processes are currently in place with Service Delivery Teams managing the various aspects of the highway service, and these are the appropriate groups to continue to manage the associated risks. The teams include representatives from the Council, consultants and contractors involved in carrying out the works, and they report to the Contract Management Meeting comprising senior managers from those organisations.

Financial Implications

41. The highway network and related infrastructure forms the Council's largest asset, and has a replacement value of over £5 billion. It is important that it is maintained in the most cost-effective way in order to obtain value for money. This includes the use of a whole life costing approach to inform investment decisions on highway maintenance.
42. The capital budget for 2018/19 will be £16,139,000, which is less than the £21,000,000 available in recent years. The current surfacing programme has been developed on the basis of the approved budget.

43. The increasing drive for asset management from DfT will mean that failure to demonstrate the application of this approach will result in reduced funding from central government through the incentive fund. It is therefore important to meet the requirements of the incentive funding self assessment, and measures are in place to ensure this.

Legal Implications

44. The Council has a duty under the Highways Act to maintain the county's roads. The highway inspection procedures, policies and improvement plans ensure that this duty is fulfilled. The investment and improved road conditions in recent years is helping the Council meet its responsibilities with regard to road maintenance.

Options Considered

45. The recent investment in highways maintenance has seen a substantial improvement in the condition of the county's roads, which are in better condition than the south west and national averages.
46. The proposed scheme list for 2018/19 has been developed based on the condition data and local knowledge and is considered to represent a realistic programme in view of current funding levels.
47. There is a need to continue to apply asset management principles to the highway network and to ensure the performance of the contractors involved in delivering the service is good in order to keep the network in good condition and to ensure value for money.

Conclusions

48. The highway network forms the Council's largest asset, and it is important that it is maintained in the most cost-effective way in order to show value for money. This includes the use of whole life costing approaches to inform investment decisions.
49. The 'Local Highways Investment Fund 2014 – 2020' has provided the opportunity to address the longstanding under investment in highways maintenance, which has been a problem nationally for many years. The significant investment of £21 million in previous years by Wiltshire Council has seen a substantial improvement in the condition of the highways network.
50. A programme of road resurfacing for 2018/19 has been identified, based on safety needs and the need to improve the condition of the highway network and related assets.

Parvis Khansari
Director Highways and Transport

Report Author:
Peter Binley
Head of Highways Asset Management and Commissioning
March 2018

The following unpublished documents have been relied on in the preparation of this report:

None

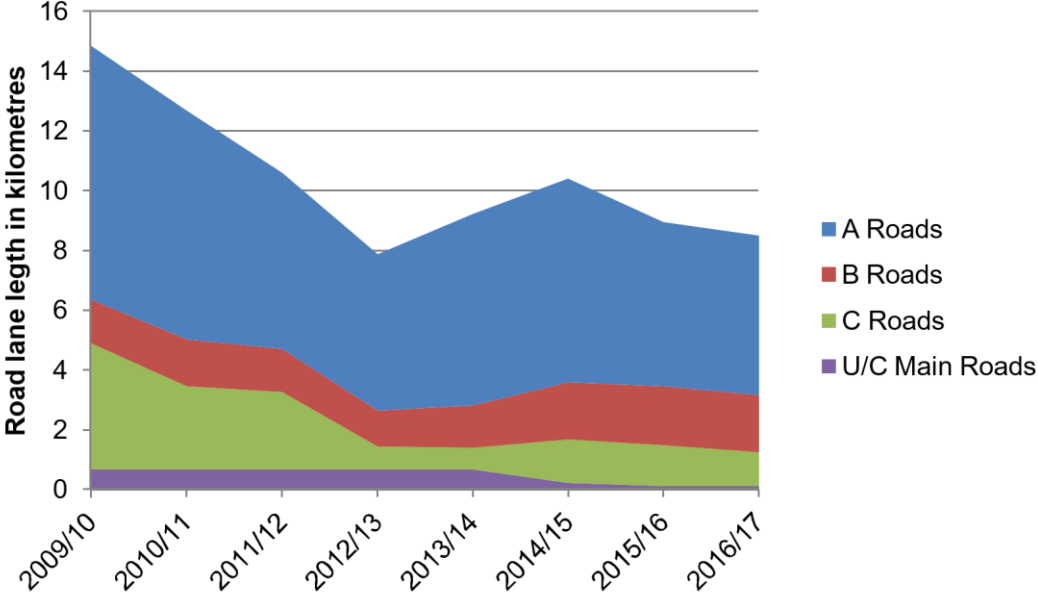
Appendices

Appendix 1 – Road Conditions by Area Board 2009 to 2017

Appendix 2 – Surfacing Scheme List 2018/19

Appendix 3 – Map of Surfacing Sites 2018/199

Amesbury Area Board Roads in Poor Condition



Wiltshire Highways Surfacing Proposals 2018/19



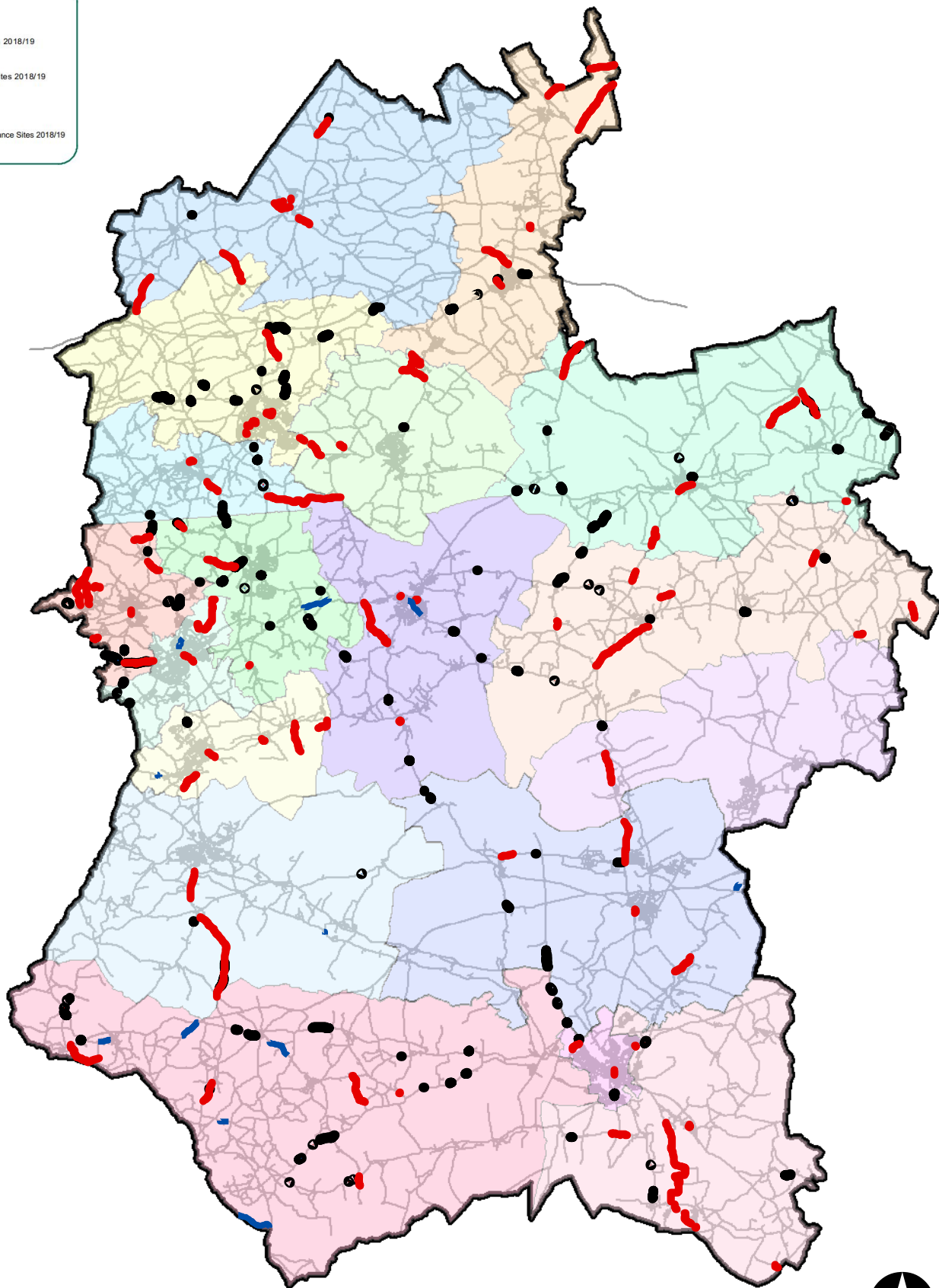
February 2018

Amesbury			
Road	2018/19 Schemes	Treatment	
A345	A345 Figheldean to Durrington	Surface Treatment	£205,410.14
B3086	B3086 London Road, Shrewton	Surface Treatment	£53,207.96
A345	A345 Workhouse Hill, Amesbury (Salisbury Road)	Surfacing	£168,852.06
A338	A338 Cholderton (Carriageway Repairs)	Carriageway Repairs	£60,000.00
A338	A338 Idmiston to Porton	Surfacing	£169,136.85
	Total Schemes		£656,607.01
Road	Skid Resistance Improvements	Treatment	
A360	From A360 Tank Crossing 'F' to Tilshead (975817 & 979210)	Retexture	£2,697.60
A360	A360 North of New Cut Cross Roads (979180)	Retexture	£3,343.90
A360	A360 The Avenue to Church Bottom (979182)	Retexture	£5,704.30
A360	A360 North of Stoford Xrds at Camp Cottages (979184 & 975792)	Retexture	£43,043.58
UC	UC The Packway to Netheravon Rd Roundabout (976791)	Retexture	£8,092.80
B3086	B3086 Shrewton Road at Bustard Crossroads (976763)	Retexture	£961.02
	Total Skid Resistance		£63,843.20
Road	Reserve or future years sites – to be reviewed	Treatment	
A360	A360 Tilshead	Surfacing	£200,000.00
A345	Countess Road South from A303 to Earls Court Rd Mini, Amesbury	Surfacing	£217,027.72
UC	Berwick Lane, Steeple Langford	Surfacing	£19,630.00
UC	Fisbury Rd & Kingsbourne Close, Winterbourne Dauntsey	Surfacing	£65,028.60
A345	A345 Beehive Rbt to Winterbourne Gunner junc.	Surfacing	£119,488.64
A3028	A3028 Bulford Double Hedges	Surfacing	£119,683.00
B3086	High Street, Shrewton	Surfacing	£169,734.08

A360	A360 Maddington St/Amesbury Rd, Shrewton	Surfacing	£314,793.00
A3028	A3028 Larkhill Rd, Durrington leading to High Street, Bulford	Surfacing	£204,099.12
C291	Elston Lane, Orcheston	Surface Treatment	£26,592.69
	Total – Future sites		£1,456,076.85

Legend

- Repair Sites 2018/19
- Surfacing Sites 2018/19
- Skid Resistance Sites 2018/19



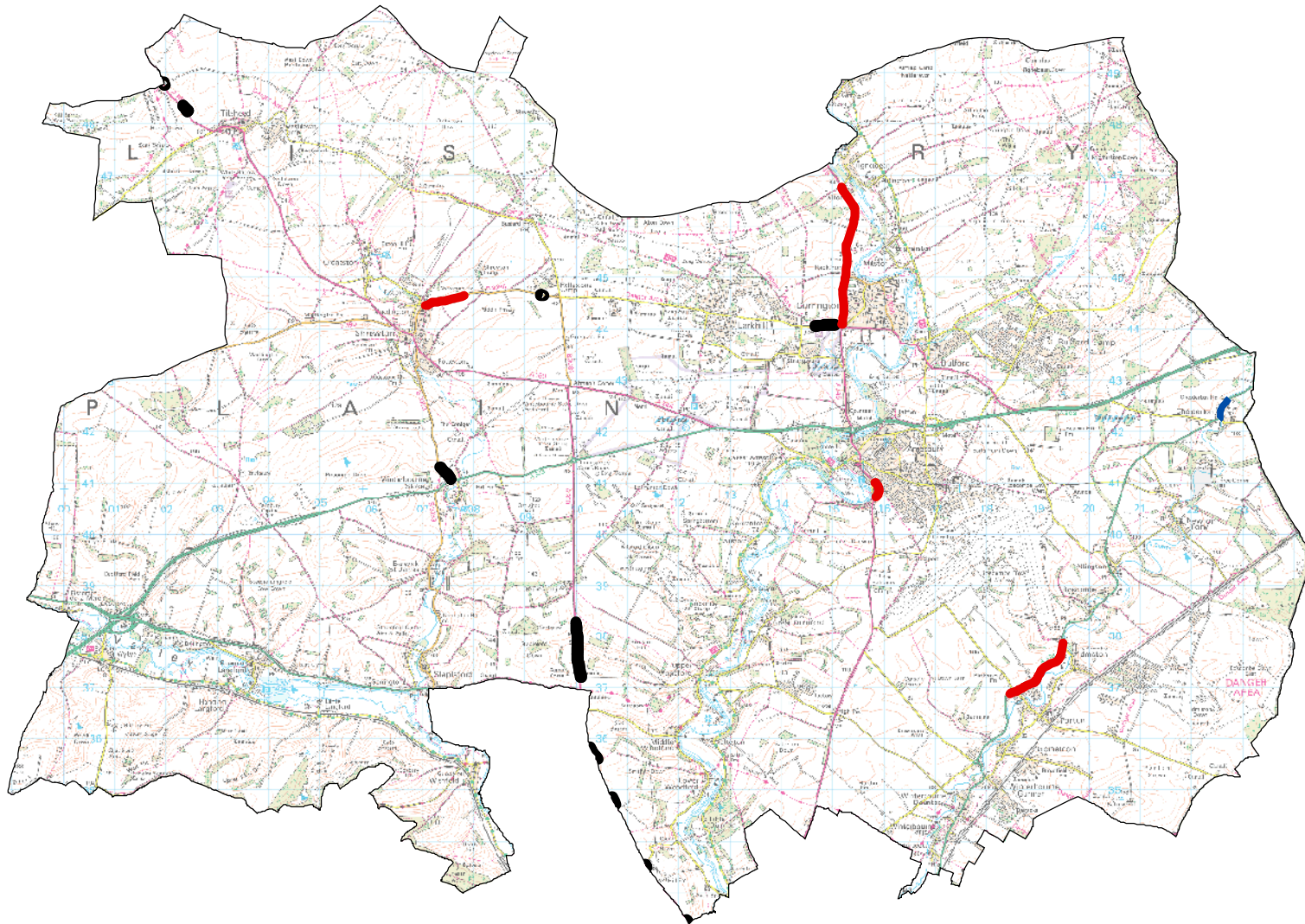
1:380,000

© Crown copyright and database rights 2018 Ordnance Survey 100049050



Legend

- Repair Sites 2018/19
- Surfacing Sites 2018/19
- Skid Resistance Sites 2018/19



Page 66

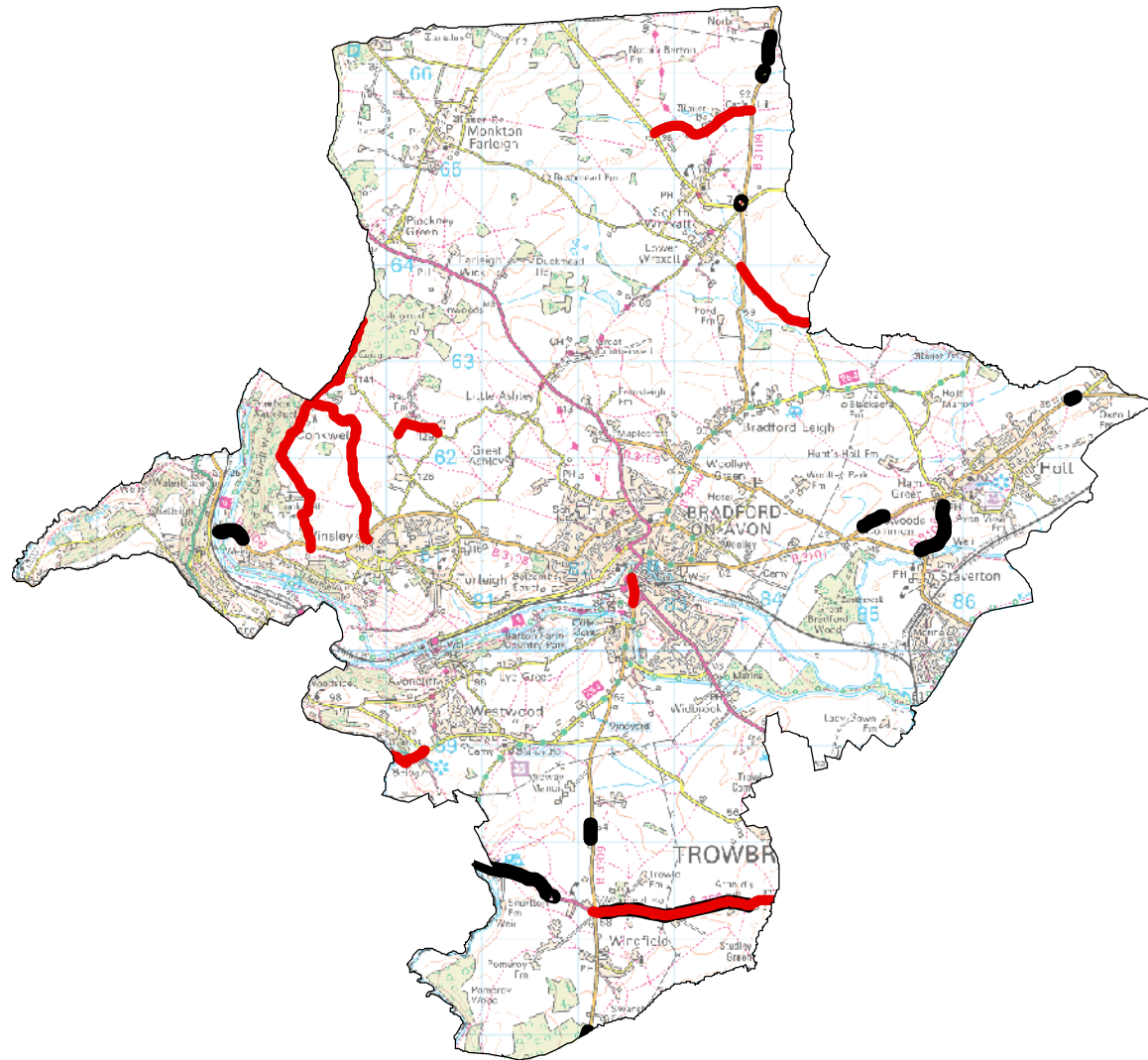


Legend

Repair Sites 2018/19

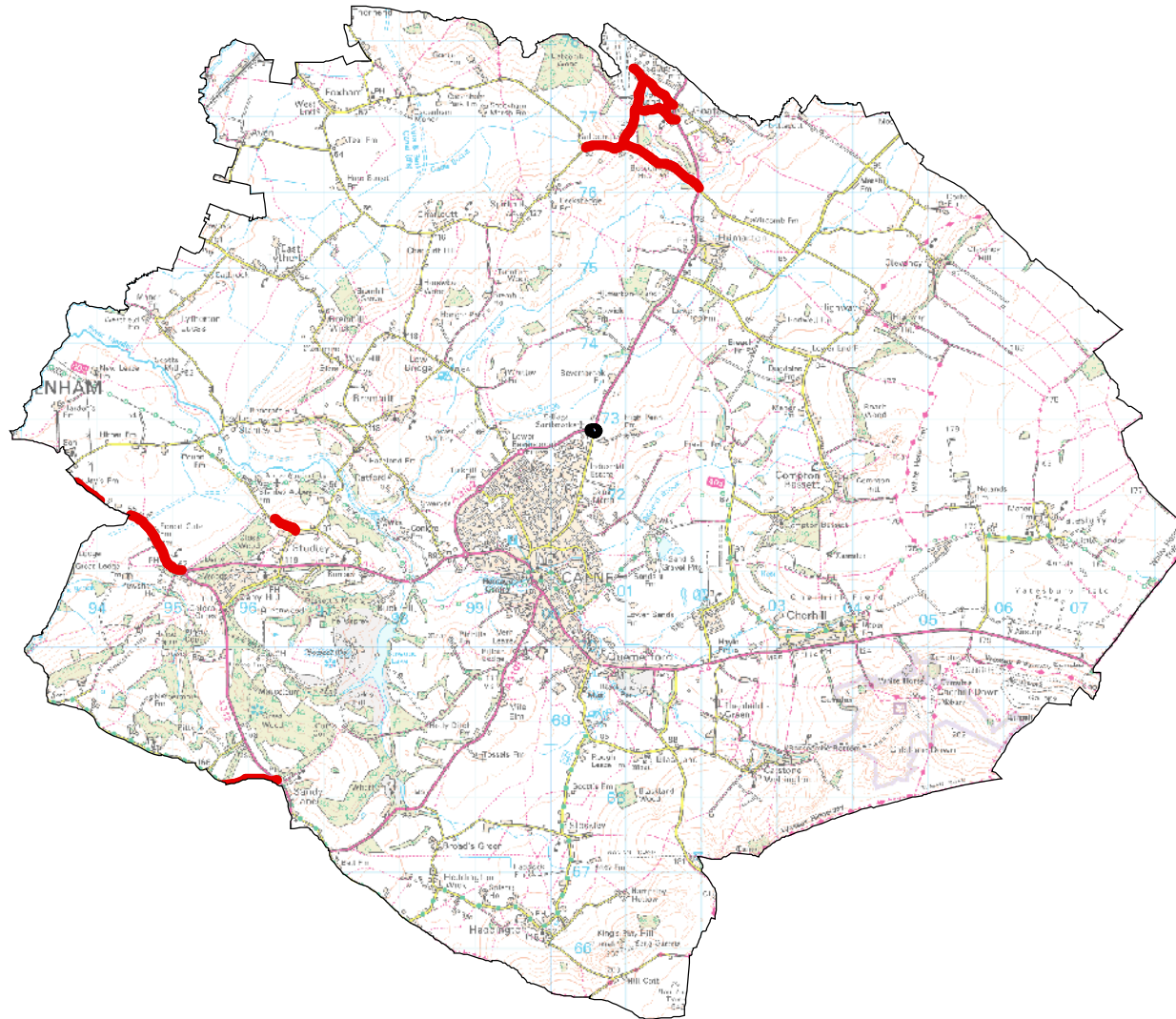
Surfacing Sites 2018/19

Skid Resistance Sites 2018/19



Legend

- Repair Sites 2018/19
- Surfacing Sites 2018/19
- Skid Resistance Sites 2018/19

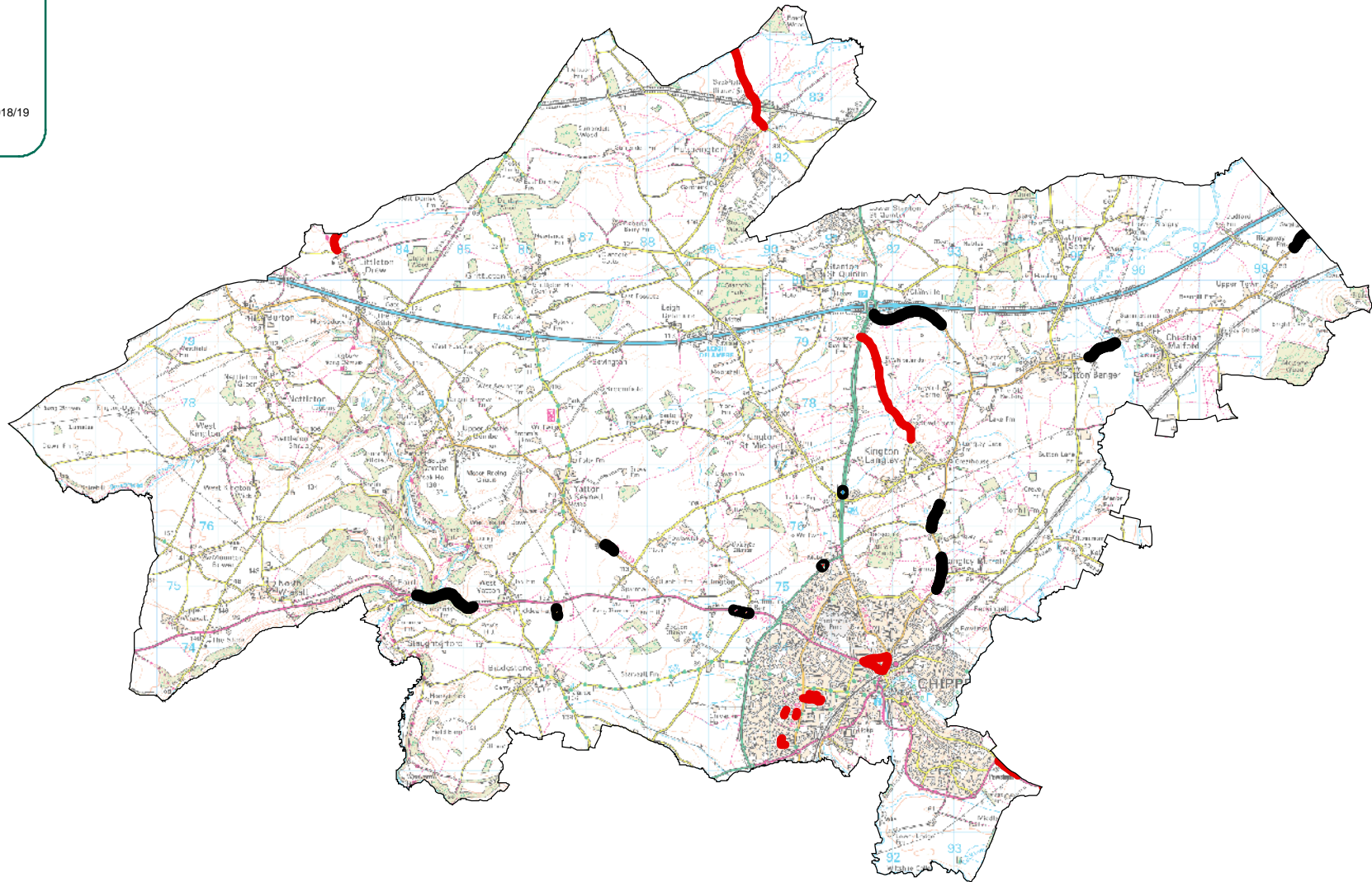


Legend

Repair Sites 2018/19

Surfacing Sites 2018/19

Skid Resistance Sites 2018/19

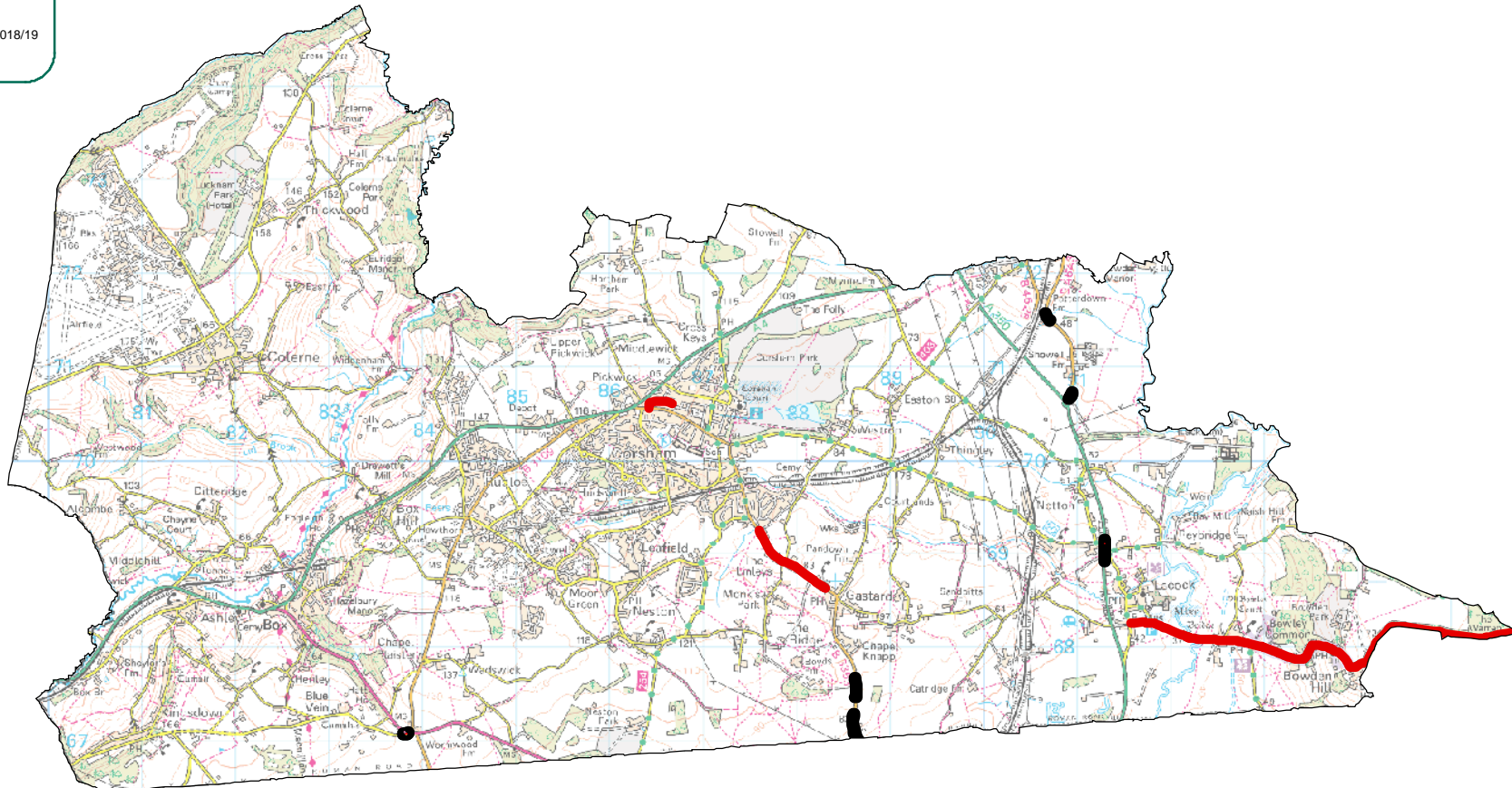


Legend

Repair Sites 2018/19

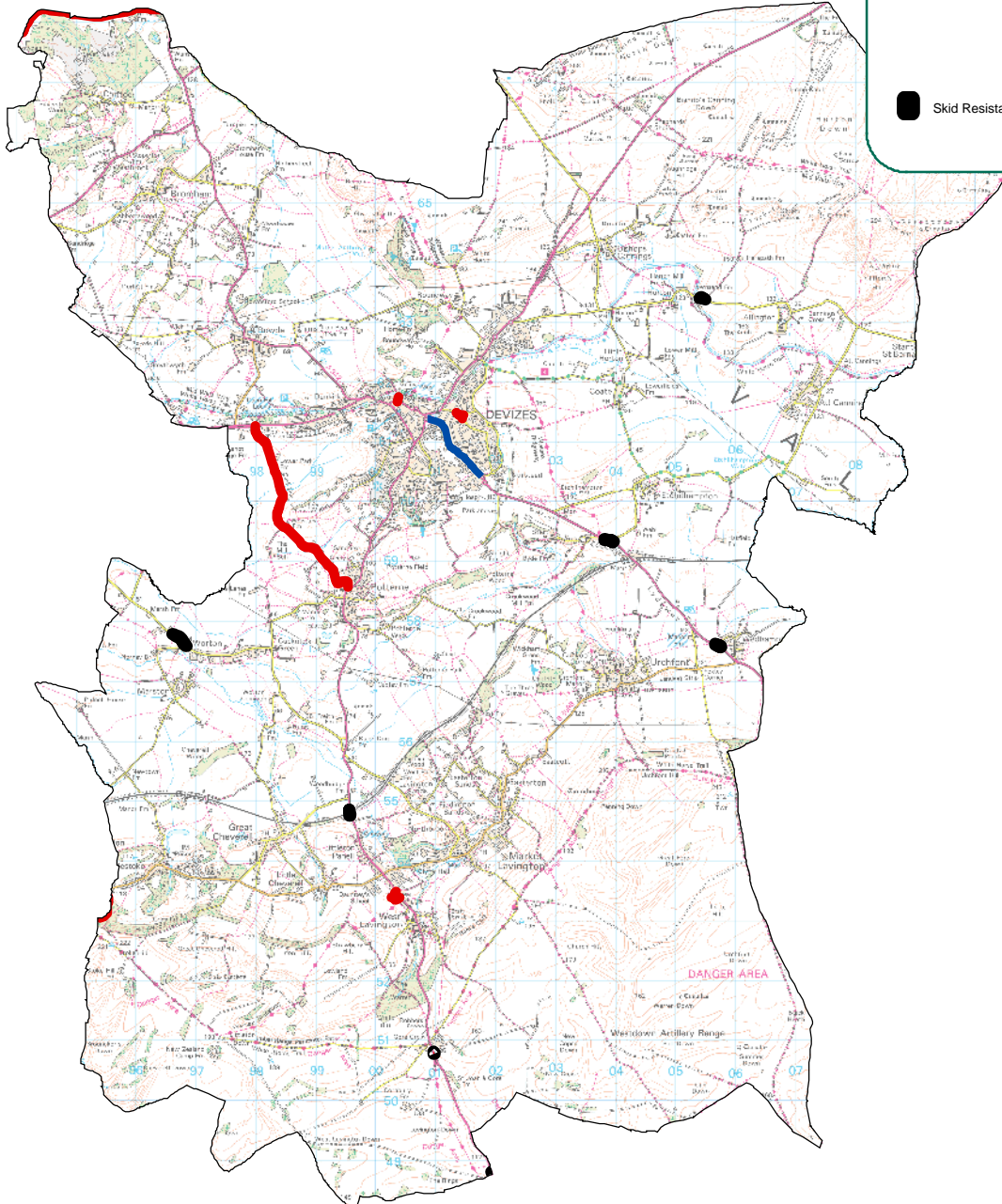
Surfacing Sites 2018/19

Skid Resistance Sites 2018/19



Legend

- Repair Sites 2018/19
- Surfing Sites 2018/19
- Skid Resistance Sites 2018/19

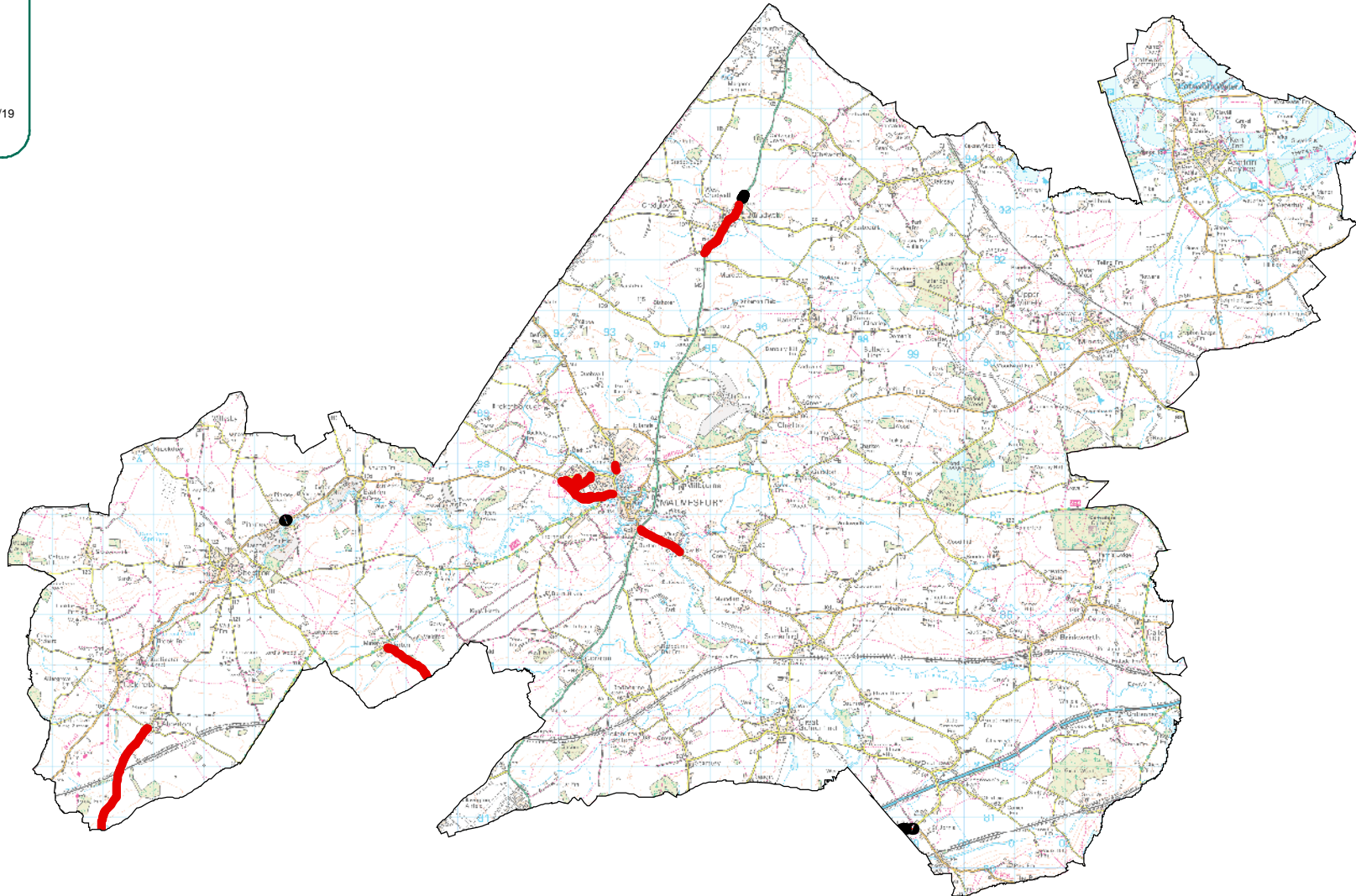


Legend

Repair Sites 2018/19

Surfacing Sites 2018/19

Skid Resistance Sites 2018/19

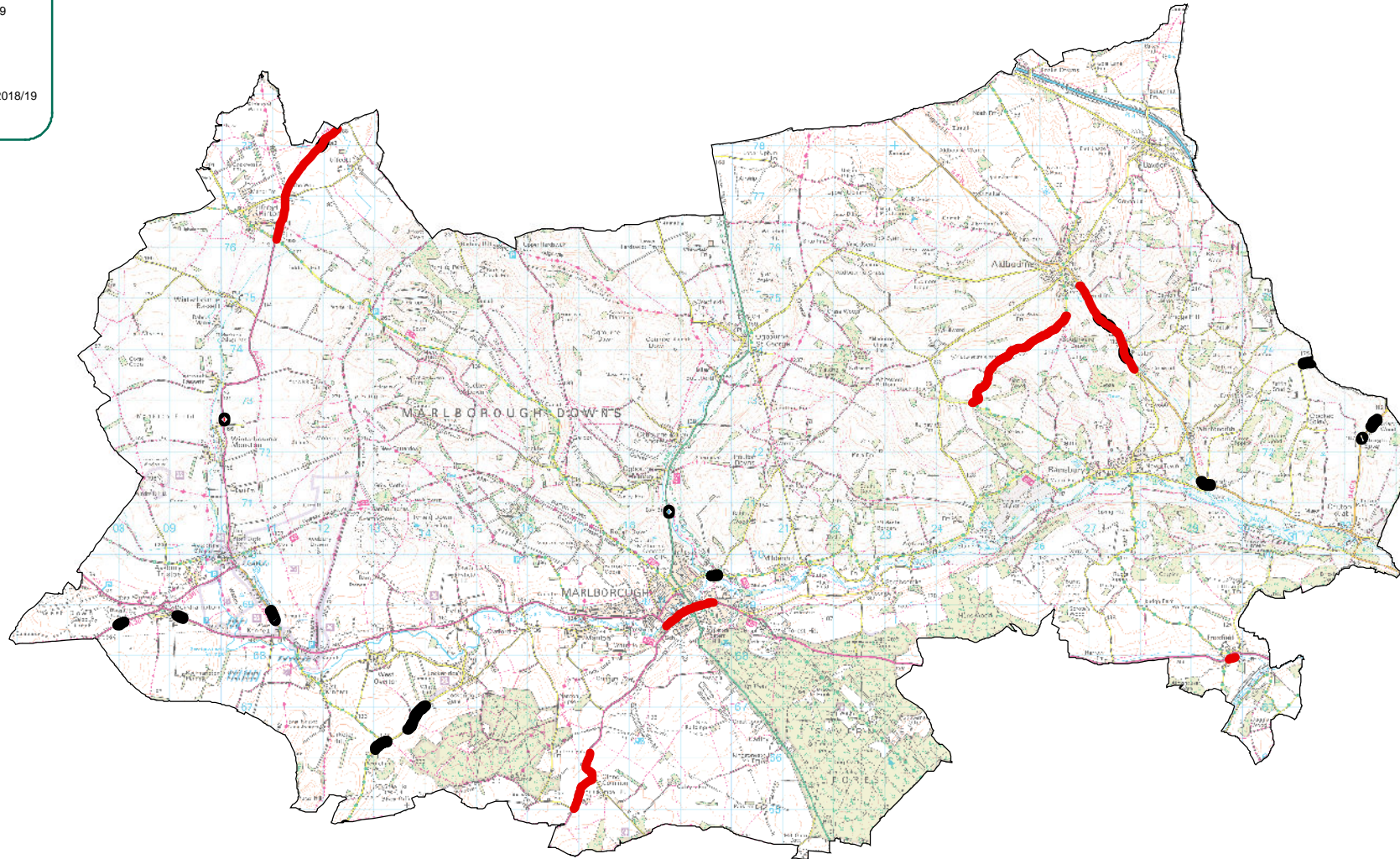


Legend

Repair Sites 2018/19

Surfacing Sites 2018/19

Skid Resistance Sites 2018/19

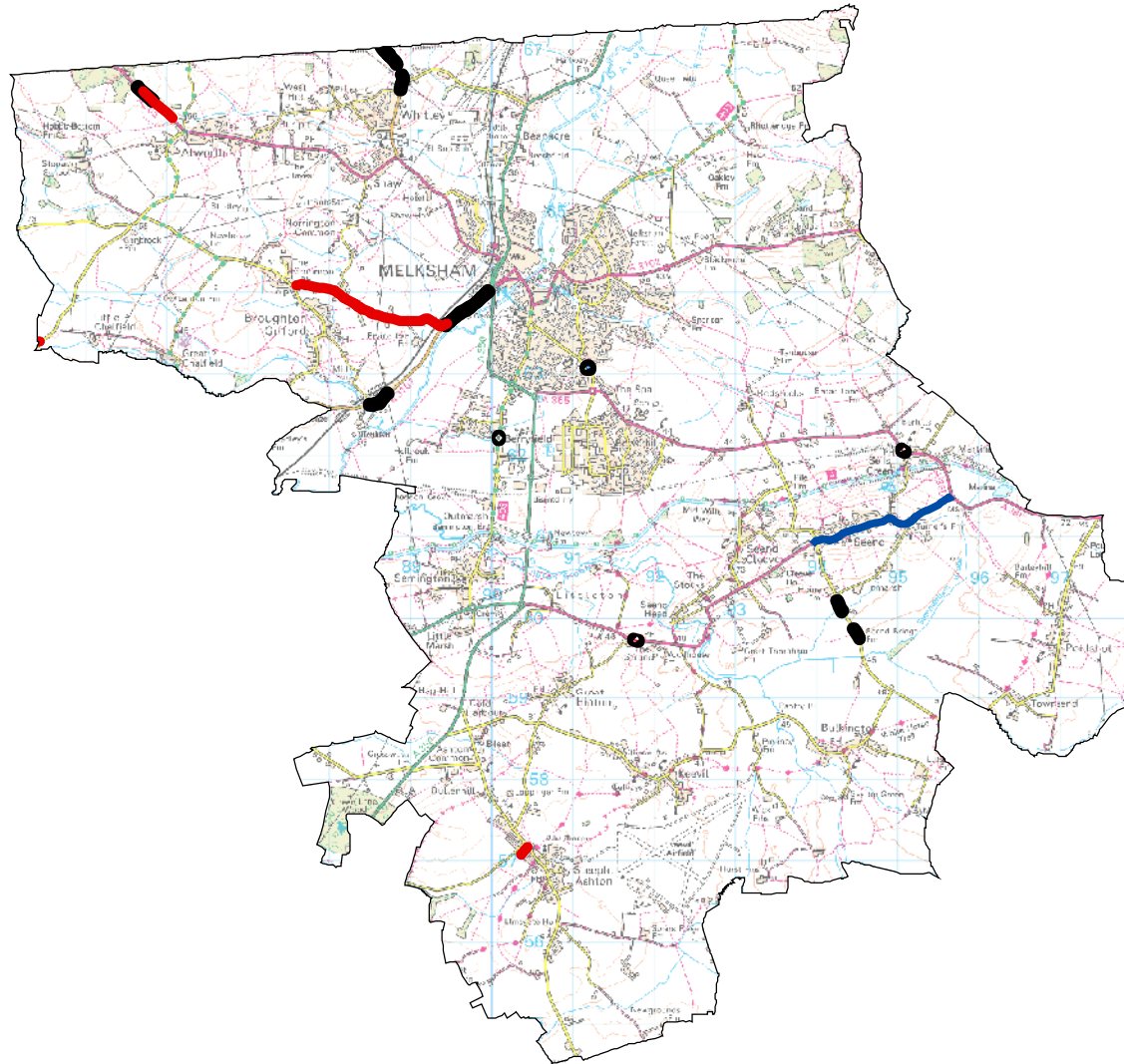


Legend

Repair Sites 2018/19

Surfacing Sites 2018/19

Skid Resistance Sites 2018/19

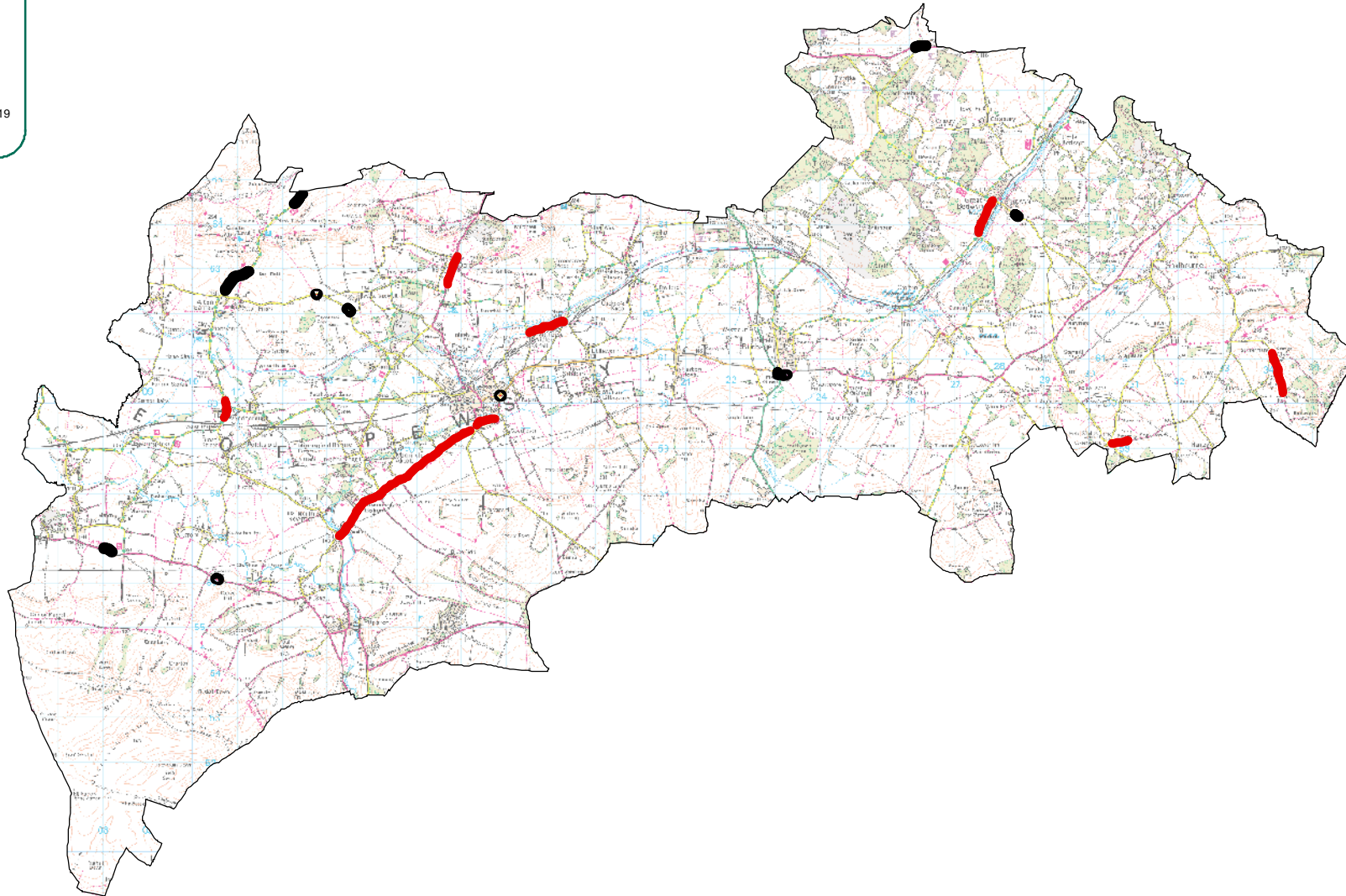


Legend

Repair Sites 2018/19

Surfacing Sites 2018/19

Skid Resistance Sites 2018/19

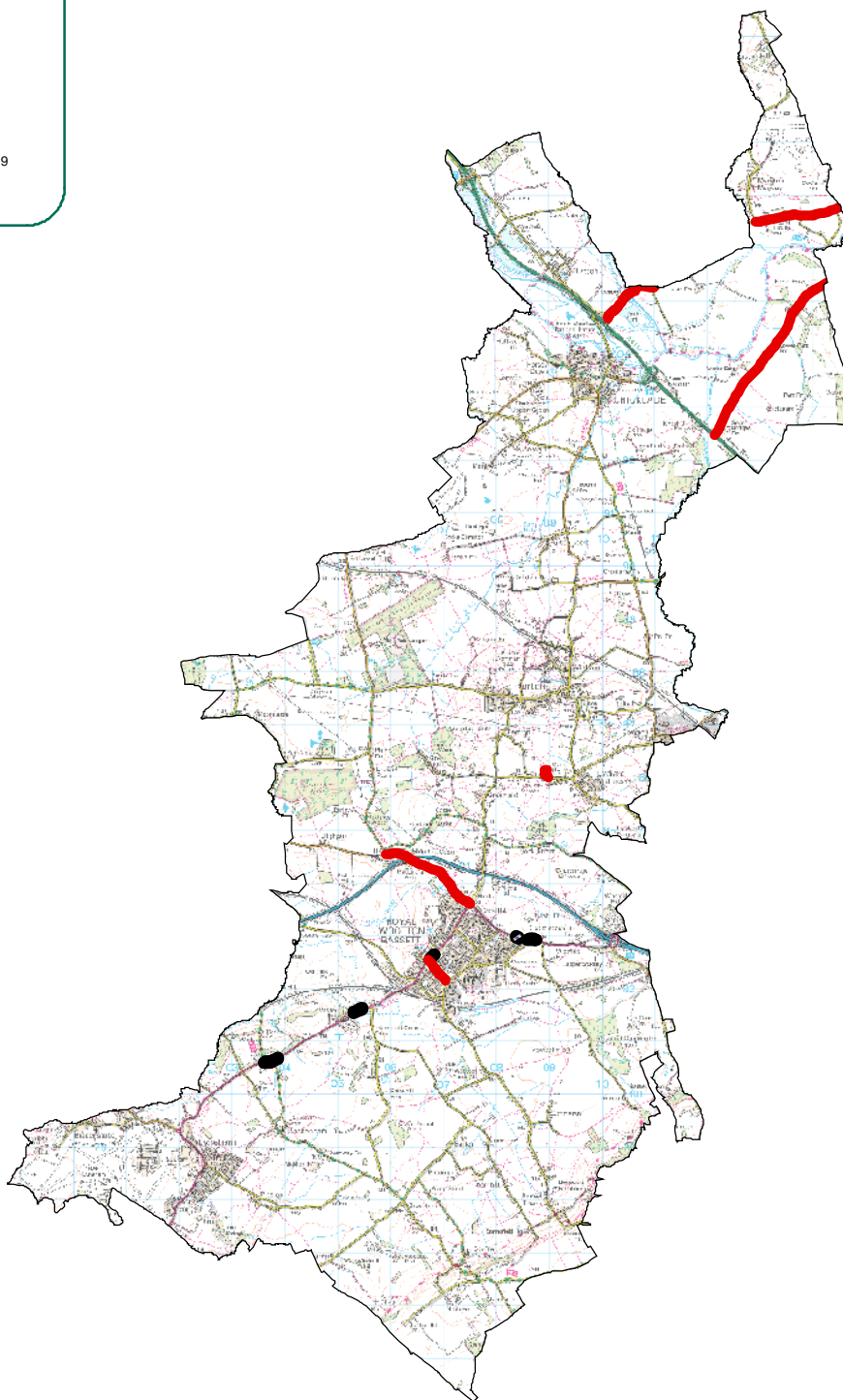


Legend

Repair Sites 2018/19

Surfacing Sites 2018/19

Skid Resistance Sites 2018/19

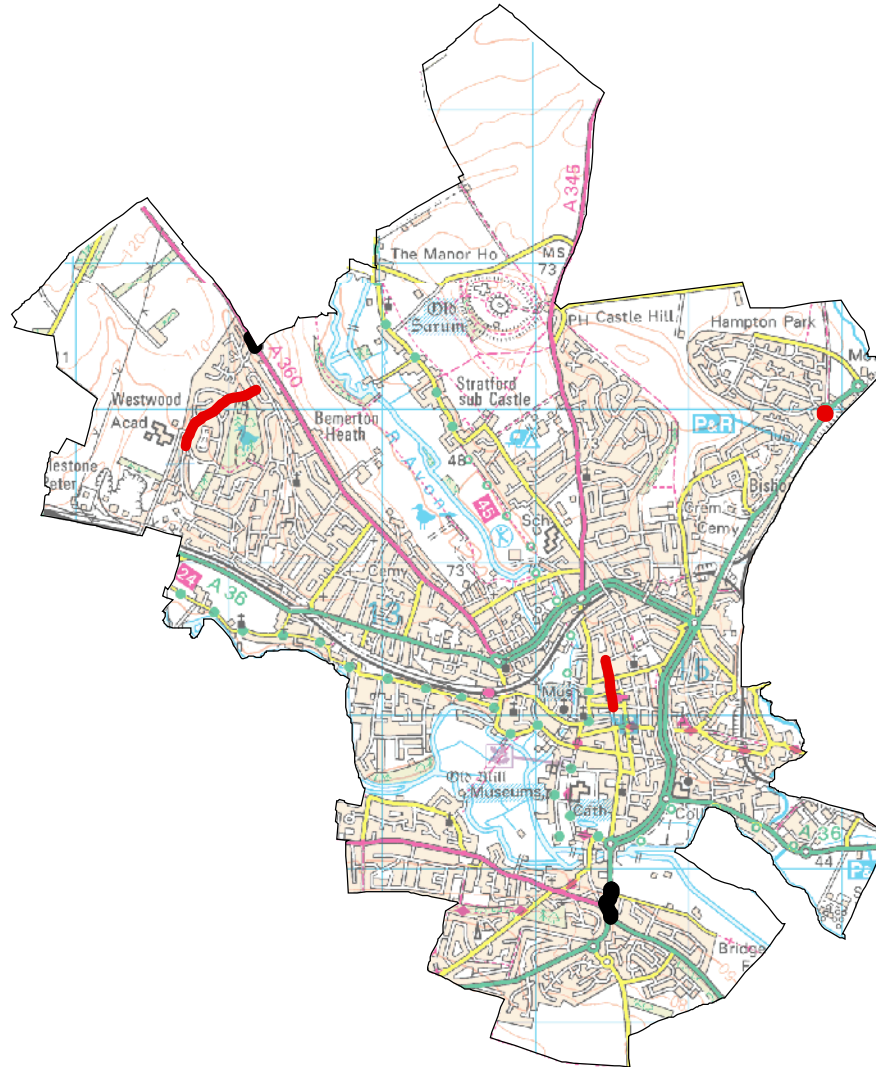


Legend

Repair Sites 2018/19

Surfacing Sites 2018/19

Skid Resistance Sites 2018/19

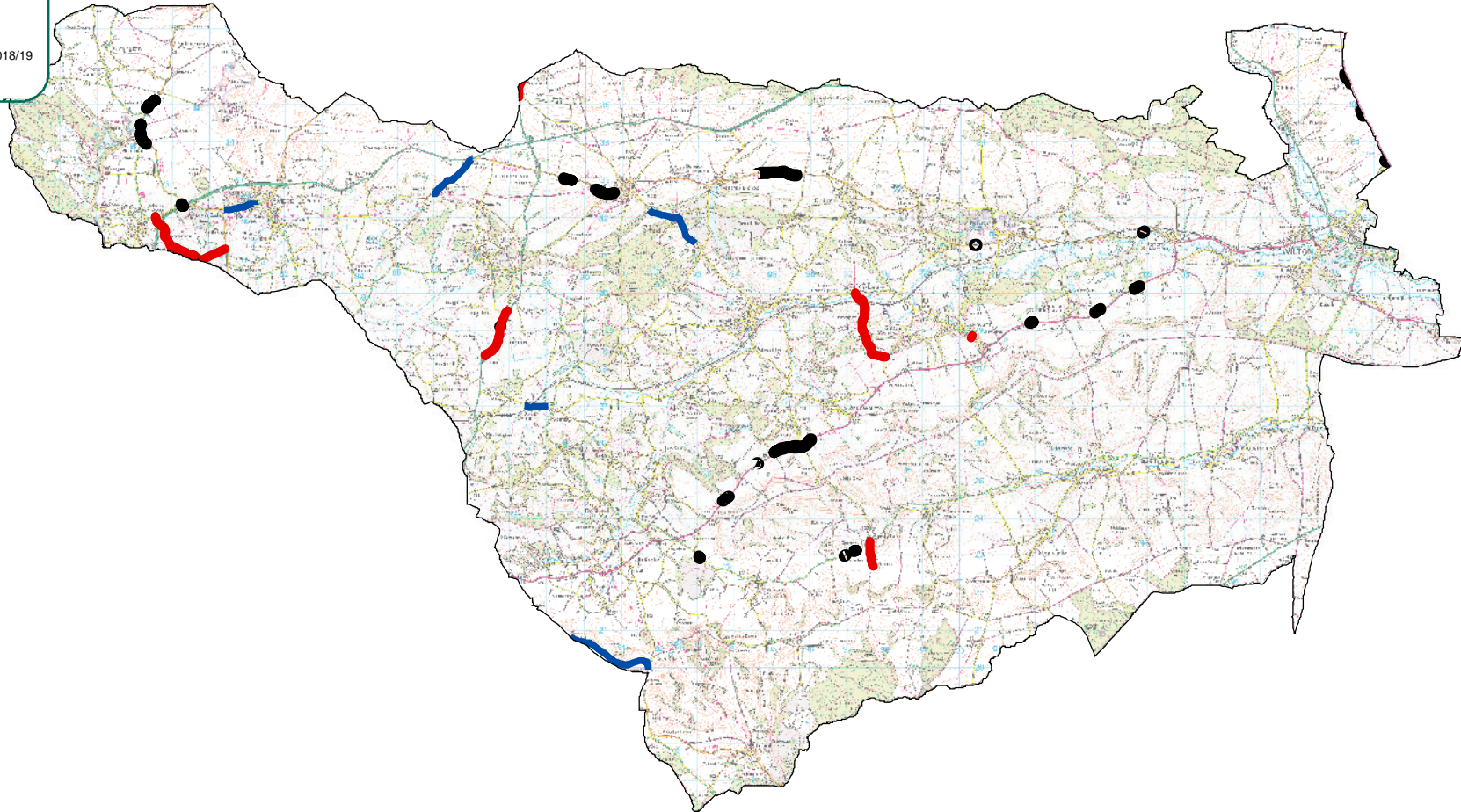


Legend

Repair Sites 2018/19

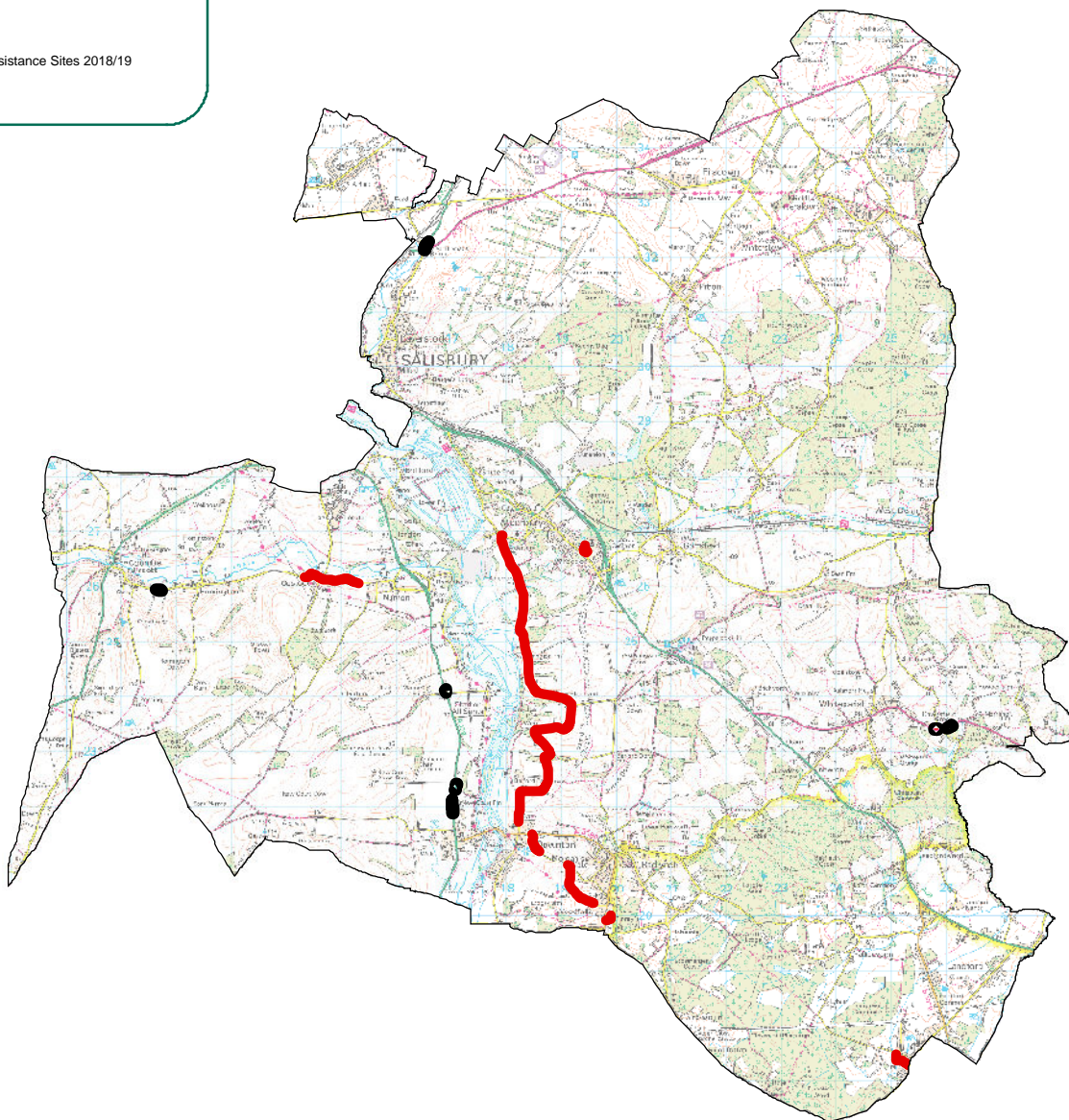
Surfacing Sites 2018/19

Skid Resistance Sites 2018/19



Legend

- Repair Sites 2018/19
- Surfacing Sites 2018/19
- Skid Resistance Sites 2018/19



Legend

Repair Sites 2018/19

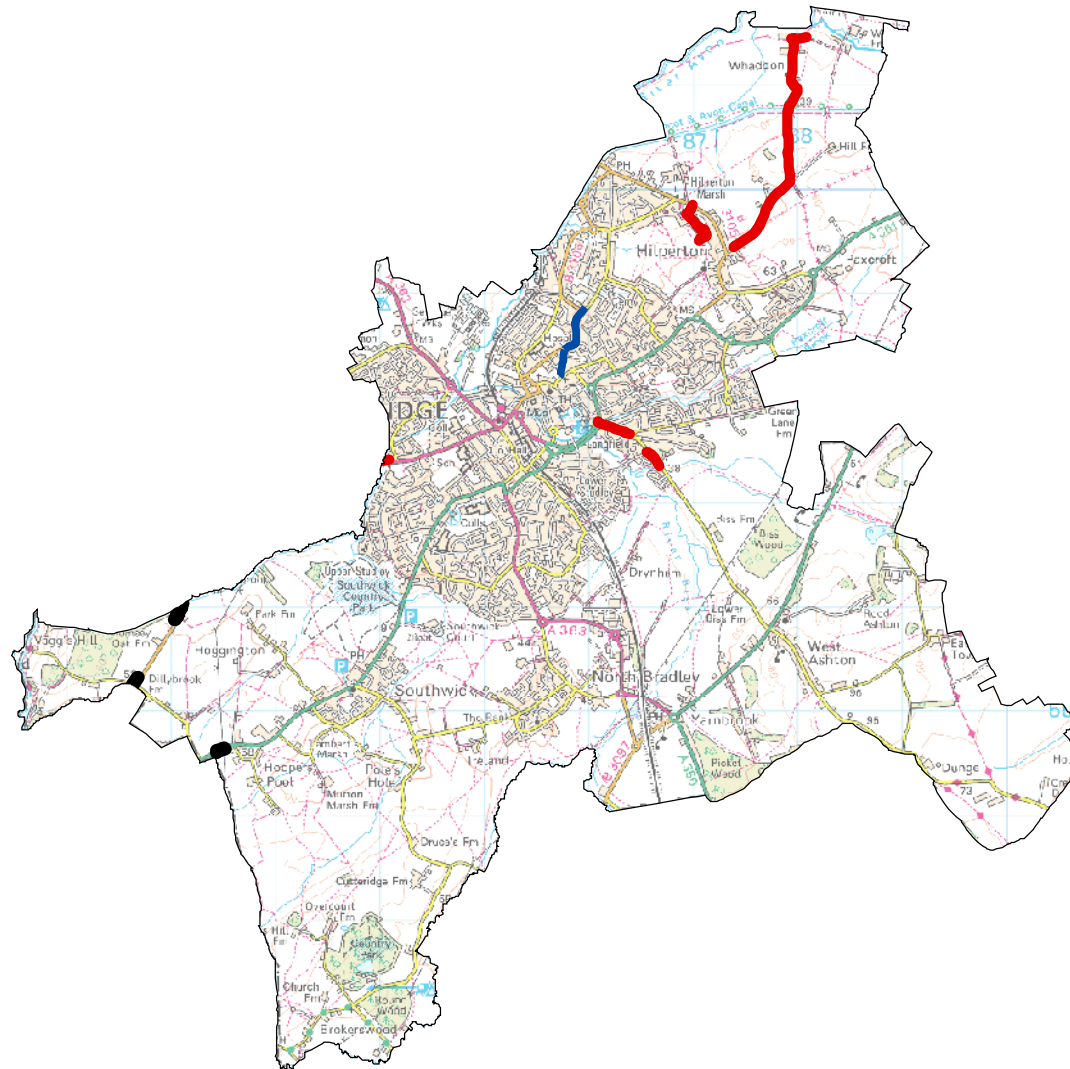
Surfacing Sites 2018/19

Skid Resistance Sites 2018/19



Legend

- Repair Sites 2018/19
- Surfacing Sites 2018/19
- Skid Resistance Sites 2018/19

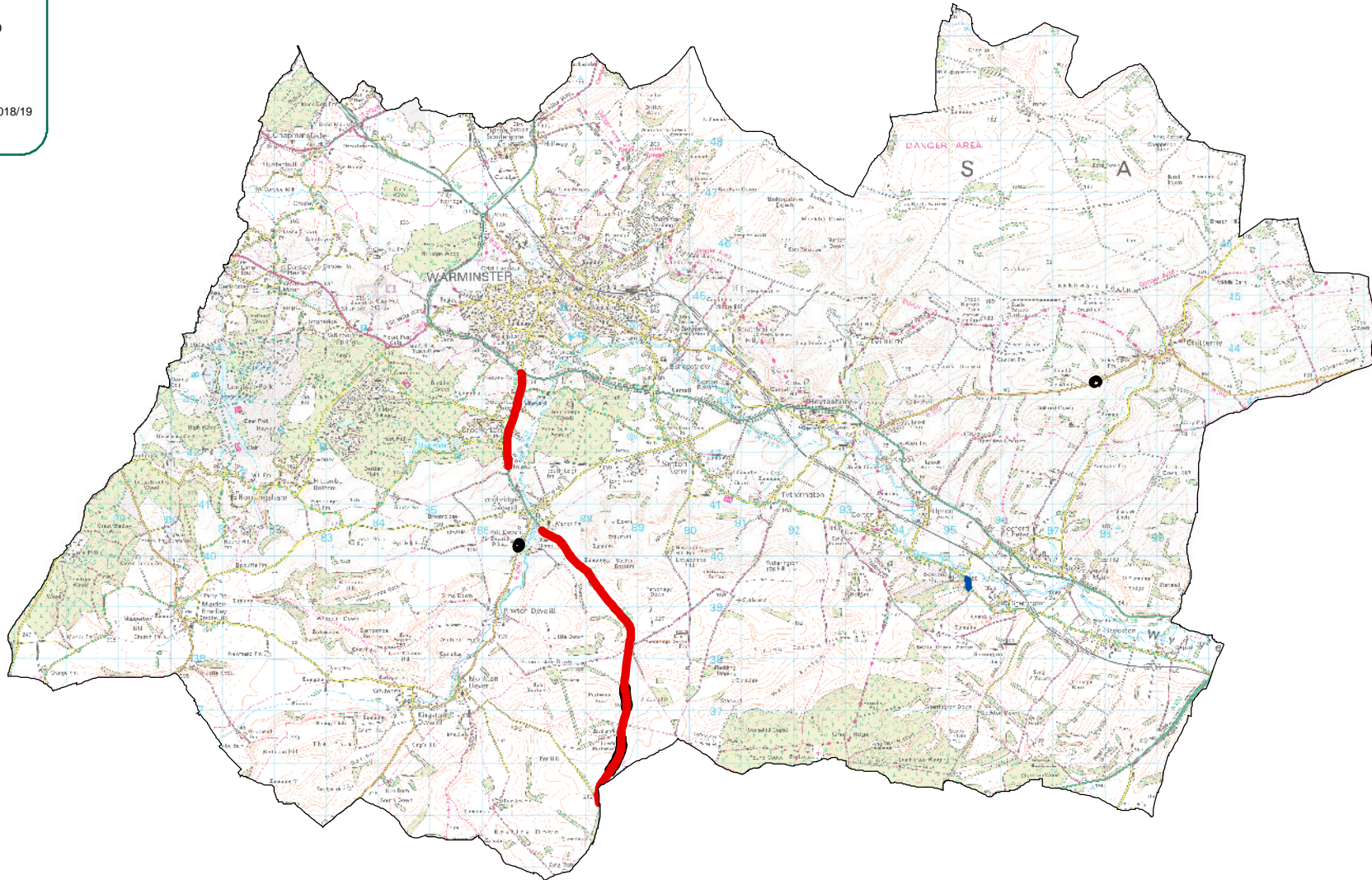


Legend

Repair Sites 2018/19

Surfacing Sites 2018/19

Skid Resistance Sites 2018/19



Legend

- Repair Sites 2018/19
- Surfacing Sites 2018/19
- Skid Resistance Sites 2018/19



Health & Wellbeing Summary of Activities 2017/2018

The Health & Well Being Group is a sub group of the Community Area Board. It represents a wide range of community stakeholders who work in partnership to facilitate well-being across the community area. People living in the community play a direct role in setting the agenda for this group. Well Being Groups will identify local needs, priorities and outcomes and make recommendations to the Area Board on how funding for activities should be deployed.

The H&WB group receives £6,700 delegated funds from the area board but partner organisation contribute much more than this in terms of services, volunteers and joint working.

The H&WB group meet bi monthly to accommodate the cycle of the area board meetings. However much more activity takes place in between meetings.

Below is a summary of some of the activity that has taken place through the H&WB partnership.

Safe Places now operates in Amesbury, Durrington, Larkhill and Winterbourne. 14 February - a person with dementia and the Alzheimer's Society have completed a building audit with Graham Wright at Durrington Village hall to check that the building is dementia friendly, we are also doing the same on 14th march at Winterbourne Village hall and the Methodist hall with Maureen Atkinson.

Alzheimer's Society Side by Side service became available to people with dementia in Amesbury board area where volunteers are matched to people with dementia who have similar interests and hobbies and enables them to continue to access their local community.

Dementia Friends has Delivered Dementia Friends sessions to Amesbury Police, Library and Stonehenge staff and volunteers and created approx 100 Dementia Friends!

The H&WB group held an event in Winterbourne to promote Dementia Friendly Communities across Wiltshire. This was attended by over 30 different parishes and organisations.

In December the group organised a visit to Stonehenge Visitor Centre. Over 50 older people participated in this event and the feedback from this was very good. We have since developed and good working relationship with Stonehenge and hope to be launching our Dementia Action Alliance at this venue later in the year.

The area board has funded the purchase of 5 tablets for the older people lunches held at The George Hotel in Amesbury. This is organised by St Melcroft partnership. They currently have 100 members and a regular attendance of 40+

The H&WB group recommended funding Farleys Malone to provide community lunches across the community area.

The area board has invested £5,000 in the last financial year. This has supported the following:

48 lunches arranged, organised and run for the Amesbury Community Area. **4** locations; **992** covers, average attendance 21 guests per lunch

1 Summer garden party provided, organised and hosted by FMC providing **42** afternoon teas and musical entertainment

93 Christmas meals provided, priced between £10 & £12

62 hampers, sourced and made, given to lunch guests and others delivered in the community to those who were housebound

55 Christmas presents sourced by FMC given to lunch guests **816** man hours spent, plus an additional **50** man hours, sourcing making and delivering Christmas hampers and gifts.

The H&WB group also recommended £1,500 to part fund a project to reduce social isolation across the community area through the arts. Below is a summary of the celebrating age project:

Celebrating Age Report for Amesbury Area Board

After several meetings with members of the Health and Wellbeing Group and others, formed small steering group to discuss what areas of Amesbury we should focus on. It was agreed to start more local, smaller events and build up to larger events during 2018.

Older people's consultations

Lanfear Close Sheltered Housing residents on building stronger community and use of lounge more –with Eamon Mclelland. **10 attenders**

Jo Ball, Barcroft Surgery and coffee group at The George Hotel **35**

Maureen Atkinson and Club Friday Winterbournes Day Centre **23**

Jan Tidd and Farley's Malone lunch club attenders **30**

Events so far:

- **29 September Willow and Thorn song/guitar duo**

Morning – at Club Friday, Winterbourne Gunner **26**

Afternoon – The George Hotel, Amesbury - MacMillan Coffee event **35**

- **17 November and 1st December James Aldridge, community visual artist**

All day drop in event - at Lanfear Close, Sheltered Housing, Amesbury.

Community work around 'my favourite places' and creating a group piece of work to be installed on community lounge wall in December. 10

- **19th December Adeste multi-instrumentalist duo**

Afternoon – St Melcroft Christmas party at The George Hotel

- **6 January 2018 Claudia and Anthony song/piano duo**

Afternoon - Farley's Malone Post Christmas party at Boscombe Social Club

Future plans – monthly events rotation in 4 areas to be set up from February onwards:

Bourne/Woodford area

Central Amesbury – possible use of the Library, as in CA partnership agreement

Durrington/Shrewton area

Great Wishford/Berwick St James area



Report to	Amesbury Area Board
Date of Meeting	22/03/2018
Title of Report	Community Area Grant funding

Purpose of the report:

To consider the applications for funding listed below

Applicant	Amount requested
Applicant: Amesbury Bowls Club Project Title: Amesbury Bowls Club Continuous Improvement of Facilities View full application	Amount requested £2,256.75 Total cost of project £4,513.50
Applicant: Avon & Bourne Valley Artists Project Title: Avon Bourne Valley Art Exhibition Figheldean Village Hall View full application	Amount requested £350.00 Total cost of project £770.00
Applicant: Amesbury Town Council Project Title: Centenary Pavilion - Defibrillator and Case View full application	Amount requested £733.00 Total cost of project £1,466.00
Applicant: WRVS Project Title: Welfare PCs View full application	Amount requested £1,000.00 Total cost of project £1,000.00
Applicant: Amesbury Community Group Carnival Project Title: Amesbury Community Group Carnival View full application	Amount requested £890.00 Total cost of project £890.00
Applicant: Durrington Short Mat Bowls Club Project Title: Durrington Short Mat Bowls Club Electric Carpet Machine	Amount requested £2,875.00 Total cost of project £5,750.00

View full application	
Applicant: Shrewton Silver Band Project Title: Shrewton Silver Band Music and Stands View full application	Amount requested £980.00 Total cost of project £980.00
Applicant: Brambles pre-school Project Title: Brambles new woodland project View full application	Amount requested £2,500.00 Total cost of project £5,000.00

1. Background

Area Boards have authority to approve Area Grants under powers delegated to them. Under the Scheme of Delegation Area Boards must adhere to the [Area Board Grants Guidance](#)

[The funding criteria and application forms](#) are available on the council's website.

2. Main Considerations

2.1. Councillors will need to be satisfied that funding awarded in the 2017 / 18 year is made to projects that can realistically proceed within a year of it being awarded.

2.2. Councillors must ensure that the distribution of funding is in accordance with the Scheme of Delegation to Area Boards.

2.3. Councillors will need to be satisfied that the applications meet the Community Area Board grants criteria.

3. Environmental & Community Implications

Grant Funding will contribute to the continuance and/or improvement of cultural, social and community activity and wellbeing in the community area, the extent of which will be dependent upon the individual project.

4. Financial Implications

If all grants are approved below, the area board will be in a position of overspending by £2,250. However, because we are at the end of the financial year. These applications can be considered subject to funding being allocated to the area board in the 2018/ 2019 financial year. At the time of writing we strongly believe that area boards will be allocated sufficient funding in the new financial year to make payments.

5. Legal Implications

There are no specific legal implications related to this report.

6. Human Resources Implications

There are no specific human resources implications related to this report.

7. Equality and Inclusion Implications

Community Area Boards must fully consider the equality impacts of their decisions in order to meet the Council's Public Sector Equality Duty.

Community Area Grants will give local community and voluntary groups, Town and Parish Council's equal opportunity to receive funding towards community based projects and schemes, where they meet the funding criteria.

8. Safeguarding Implications

The Area Board has ensured that the necessary policies and procedures are in place to safeguard children, young people and vulnerable adults.

9. Applications for consideration

Application ID	Applicant	Project Proposal	Requested
2786	Amesbury Bowls Club	Amesbury Bowls Club Continuous Improvement of Facilities	£2,256.75
<p>Project Description: To maintain the green and provide an excellent playing surface essential work needs to be carried out all year which requires the use of specialist machinery and equipment. The machinery shed needs to be refurbished and extended to ensure this machinery is kept in a waterproof secure and fit for purpose environment and giving those volunteers who maintain the machinery an appropriate work area which is health and safety compliant. The installation of a dishwasher and hot water dispenser will enhance the kitchen providing users with hygienic efficient cost effective and safe appliances when preparing a range of refreshments. The project will be part funded from the reserves but the remaining reserves are required for running costs and as a contingency fund to cover any unforeseen costs of repair and replacement of facilities essential machinery and equipment.</p> <p>Input from Community Engagement Manager: Amesbury Bowls Club is a well-run club in the heart of the community and well used by both residents and teams visiting. This club also goes some way to reducing social isolation and keeping people fit which in turn can reduce demands on care services in the community area.</p> <p>Proposal That the Area Board determines the application.</p>			

Application ID	Applicant	Project Proposal	Requested
2753	Avon & Bourne Valley Artists	Avon Bourne Valley Art Exhibition Figheldean Village Hall	£350.00
<p>Project Description: Art Exhibition that benefits and encourages amateur artists and run as non-profit. Last year's exhibition attracted over 300 works of art and 830 raised for Combat Stress. There is benefit to all age groups, community spirit cultural education etc. Last year visitors came from Salisbury, Warminster, Fordingbridge, Andover and most local villages. Exhibition attended by 465 art lovers. Refreshment money helps Over-60s lunches. By results- the Exhibition has grown in all 7 previous years and Area Boards input in 201516 has helped make us more professional in our offering.</p> <p>Input from Community Engagement Manager: This project is a showcase staged in the local community but appreciated across the whole of Wiltshire. This is a classic example of communities coming together for the benefit of those in the local area.</p>			
<p>Proposal That the Area Board determines the application.</p>			

Application ID	Applicant	Project Proposal	Requested
2704	Amesbury Town Council	Centenary Pavilion - Defibrillator and Case	£733.00
<p>Project Description: Amesbury Town Council wishes to install a defibrillator at the Centenary Pavilion. The installation of a defibrillator will benefit the wider community of the town. The potential for saving a life is dependent upon the time the medical help can be attained and the better chance of survival.</p> <p>Input from Community Engagement Manager: The Town Council will bear the costs ongoing maintenance through it precept in future years. Also, a 10-year care package will be purchased with the defibrillator and case.</p>			
<p>Proposal That the Area Board determines the application.</p>			

Application ID	Applicant	Project Proposal	Requested
2683	WRVS	Welfare PCs	£1,000.00
<p>Project Description: In order to provide the 5 Rifles community both military and civilian access to the internet for family support job search and general research etc. The request is to obtain funding for two PCs. Both military and civilian personal for retaining family contact we have staff from over 17 counties around the world serving here in Bulford to assist in the resettlement of soldiers and support staff using job search CV writing etc. As many of our community are not from the local area it will allow research of things to do and places to visit. The unit will provide funding for internet connection and monthly contract.</p> <p>Input from Community Engagement Manager: Normally the area board does not fund MOD projects. However, on this occasion we have been reassured that the civilian population will be able to use these facilities and this will help build relationships in the area.</p>			
<p>Proposal That the Area Board determines the application.</p>			

Application ID	Applicant	Project Proposal	Requested
2687	Amesbury Community Group Carnival	Amesbury Community Group Carnival	£890.00
<p>Project Description: Amesbury Carnival is an annual event for the whole community. The committee is run by volunteers and the Carnival is sponsored by entry fees and sponsorship by local businesses. The grant will be used to purchase new equipment to improve security for collection of entrance fees on the day to include a safe a coin counting machine our existing one does not count new pound coins and a note counting machine. This will enable money to be counted more accurately and allow it to be secured in the safe quickly and therefore improve security on the day. The money in our reserves is earmarked for the expected costs of the carnival including arena acts and infrastructure toilets fencing insurance etc. Income for the Carnival is not guaranteed and comes from sponsorship and gate entry.</p> <p>Input from Community Engagement Manager: The local community benefit from the Carnival as it is one of the largest carnivals in the area. Local groups and small businesses are involved in the day itself and local residents attend the day. We anticipate that 8 - 10000 people attend on the day itself</p>			
<p>Proposal That the Area Board determines the application.</p>			

Application ID	Applicant	Project Proposal	Requested
2702	Durrington Short Mat Bowls Club	Durrington Short Mat Bowls Club Electric Carpet Machine	£2,875.00
<p>Project Description: A new double carpet electronic storage roller is required for the Durrington Short Mat Bowls Club to enable their games to continue. At present the only roller in use is a manual roller and due to the ageing group and health concerns of the members practise sessions are sometimes cancelled as nobody is able to roll out the carpet. A new electronic roller will enable any member regardless of ability health and age to roll out the carpets with ease meaning practises will not have to be cancelled. This is intended to be a one-off purchase to future proof the activities of the Short Mat Bowls Club</p> <p>Input from Community Engagement Manager: There are approximately 32 members of the club who meet twice weekly to practise and match play. All of these are older members of the community and these facilities go some way to reducing social isolation and keeping them fitter for longer. All members will be able to use the new equipment, reducing the dependency on other people.</p>			
<p>Proposal That the Area Board determines the application.</p>			

Application ID	Applicant	Project Proposal	Requested
2791	Shrewton Silver Band	Shrewton Silver Band Music and Stands	£980.00
<p>Project Description: Shrewton Silver Band is a traditional village band that has been in existence in some form or another for around 185 years. The day to day running of the band is primarily funded by engagement fees players subscriptions and fundraising activities which pay for rent of practice facilities insurance and running expenses. There is a priority need to update our very old practice stands many of which are broken and just simply worn out. In addition, we desperately need to procure new music for not only the main band but also for our quintet and training band also. A successful grant application would see many different people benefit from just these two very simple enhancements. In terms of music stands both players and conductor would have an immediate uplift by being able to set up quickly and efficiently and rehearse. This would apply to all three band groups from youngsters in the training band through to the senior quintet groups. Much of the band's music is dated and there are some incredible pieces of music now being written for brass bands which we need to embrace practice stretch the band and share with audiences across our community. The main band is honoured to play for functions such as making of the Salisbury mayor concerts in St Thomas's church functions in Cathedral Close and throughout the community. We are lacking in appropriate music for our starter - learners and new music will help challenge and stretch these young hopefuls and late starters with new repertoire. The band also provides</p>			

a quintet for specific functions like the recent Amesbury Community Awards but much of the music is just re-written for 5 players. The quintet desperately needs proper quintet music so it can continue to perform well at local events.

Input from Community Engagement Manager:

This band play at may venues across the community area and many people benefit from attending events that they plan

Proposal

That the Area Board determines the application.

Application ID	Applicant	Project Proposal	Requested
2720	Brambles pre-school	Brambles new woodland project	£2,500.00

Project Description:

We have secured a lease for the land behind us we are currently at full capacity as are most other preschools in the area. This land will allow us to expand and offer 12 more children a space.

We are a preschool that is full to capacity and have just secured the space to expand to 12 more children. With preschools being full in the area we want to offer these spaces to anyone in need of outstanding childcare in the local area.

Unfortunately, we do not have the funds to fill the space with the yurt and clear the grounds all at once. Which means a delay to parents who very much are in need for childcare. We would very much appreciate some financial help as a charity we are unable to save enough funds to do this.

Input from Community Engagement Manager:

Amesbury area board has Brambles in the past. This group should consider ways of making the charity more self-sustaining into the future and seek other forms of funding rather than relying on the area board.

Having said that. Child care places are a premium in this community area and this project will allow a further 12 places.

Proposal

That the Area Board determines the application. Subject to any planning permissions being granted and the balance of funding being in place.

Also in line with section 4 above. The area board can consider this award at this time but on condition of funding being delegated to the area board in the new financial year 2018 /2019

No unpublished documents have been relied upon in the preparation of this report

Report Author:

Dave Roberts

Community Engagement Manager

Dave.roberts@wiltshire.gov.uk

Summary of grants delegated to Amesbury Area Board 2017 /2018

For the financial year 2017 / 2018, Wiltshire Council delegated £55,530 to Amesbury Area Board to allocate to voluntary organisations and community groups across the community area.

This funding has been allocated to 19 different projects. In return, this funding has levered in £551,634.00 into for projects that have benefitted many people from across the whole community area.

These projects have taken place in the following areas:

Amesbury, Durrington, Steeple Langford, Woodford, Bulford, Boscombe, Newton Toney, Winterbourne, Wylde, Cholderton, Figheldean and Shrewton.

The range of projects either part or fully funded have been:

Carnivals and community events, De-fibrillators, play equipment and nurseries, football clubs, village halls, children's play areas, youth equipment, equipment for older people's clubs, day centres and outdoor education.

The smallest amount awarded has been £750 and the largest £5,000.

These projects have gone some way to meeting targets in the Joint Strategic Assessment in the following ways:

Reducing social isolation, building resilient communities, supporting litter picks, positive activities for young people and children, making village halls more sustainable into the future and bringing people together in rural areas.

